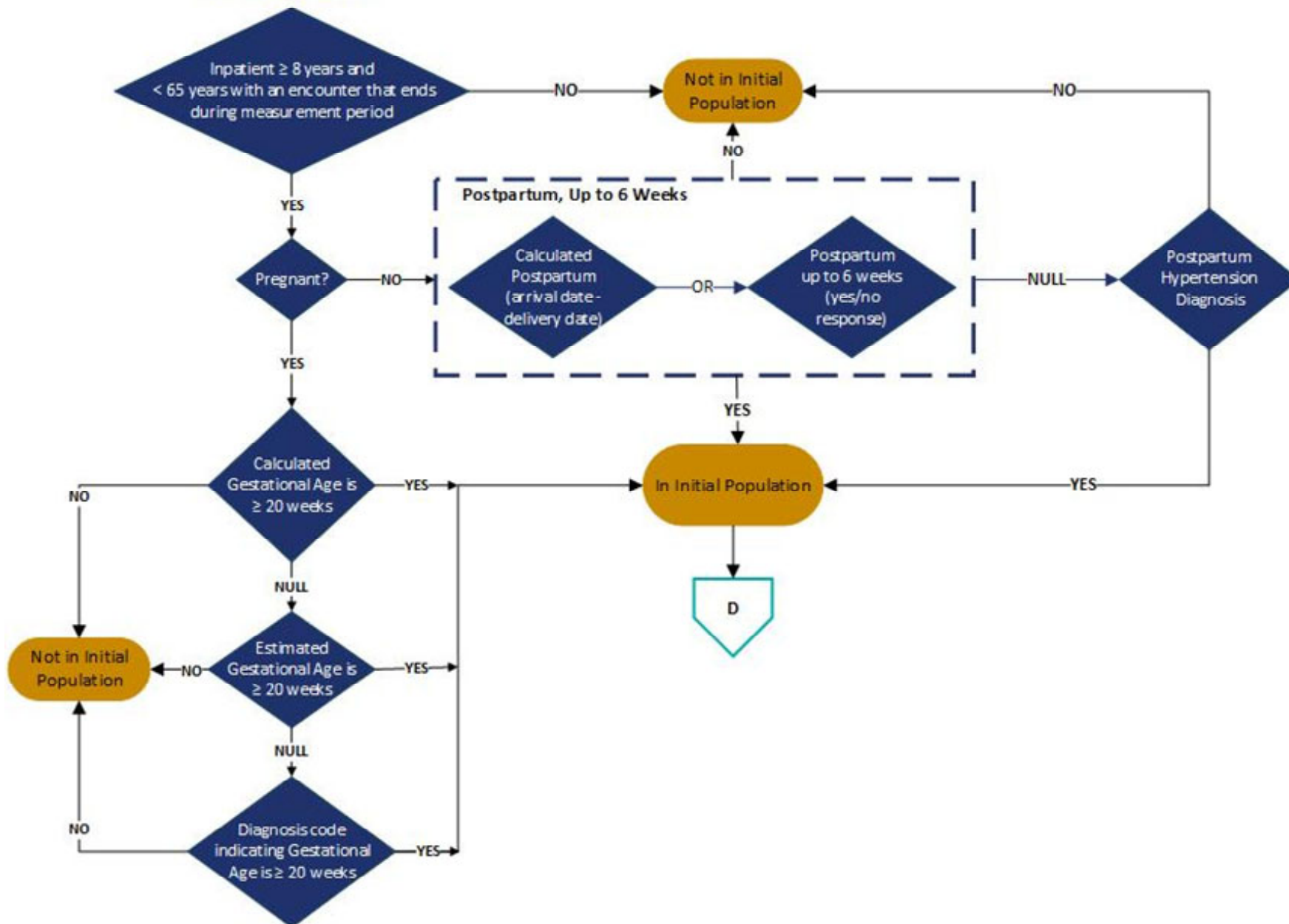


Timely Treatment of Severe Hypertension

2026 eCQM Flow
Identifier: PC-08 v1

Pregnant or postpartum patients with confirmed severe hypertension (systolic ≥ 160 mmHg or diastolic ≥ 110 mmHg) who received approved antihypertensive medications 60 minutes or less from onset of the FIRST severe hypertension episode.

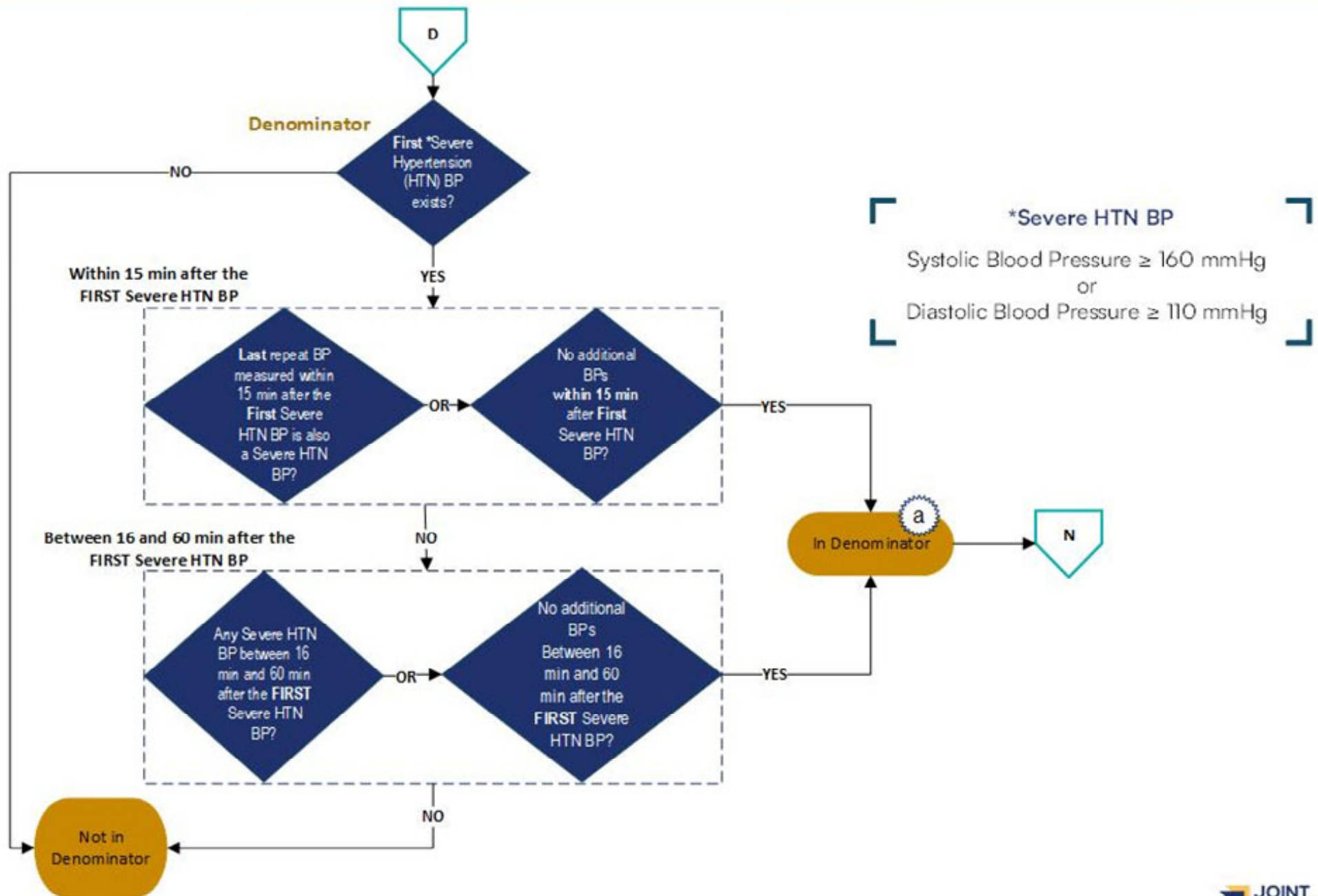
Initial Population



Timely Treatment of Severe Hypertension

2026 eCQM Flow
Identifier: PC-08 v1

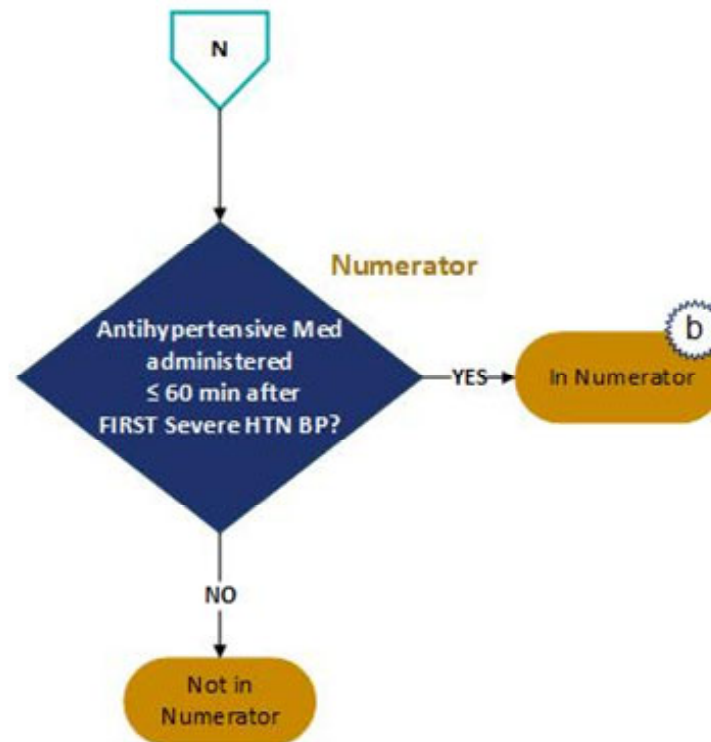
Pregnant or postpartum patients with confirmed severe hypertension (systolic ≥ 160 mmHg or diastolic ≥ 110 mmHg) who received approved antihypertensive medications 60 minutes or less from onset of the FIRST severe hypertension episode.



Timely Treatment of Severe Hypertension

2026 eCQM Flow
Identifier: PC-08 v1

Pregnant or postpartum patients with confirmed severe hypertension (systolic ≥ 160 mmHg or diastolic ≥ 110 mmHg) who received approved antihypertensive medications 60 minutes or less from onset of the FIRST severe hypertension episode.



Sample Calculation

$$\text{Performance Rate} = \frac{\text{Numerator (b = 90 patients)}}{\text{Denominator (a = 100 patients)}} = 90\%$$

Timely Treatment of Severe Hypertension

2026 eCQM Flow
Identifier: PC-08 v1

Pregnant or postpartum patients with confirmed severe hypertension (systolic ≥ 160 mmHg or diastolic ≥ 110 mmHg) who received approved antihypertensive medications 60 minutes or less from onset of the FIRST severe hypertension episode.

Measure Flow Narrative

Measure Description

Pregnant or postpartum patients with confirmed severe hypertension (systolic ≥ 160 mmHg or diastolic ≥ 110 mmHg) who received approved antihypertensive medications 60 minutes or less from onset of the FIRST severe hypertension episode.

Initial Population

Inpatient hospitalizations for patients age greater than or equal to 8 years and less than 65 admitted to the hospital for inpatient acute care with a discharge date that ends during the measurement period and are either pregnant with a gestational age greater than or equal to 20 weeks or postpartum, up to 6 weeks after delivery.

Denominator

Inpatient hospitalizations with a severe hypertension reading (systolic ≥ 160 mmHg or diastolic ≥ 110 mmHg) and any of the following conditions related to the FIRST severe hypertension reading:

- The last repeat blood pressure (BP) measurement within 15 minutes is another severe hypertension reading.
- There are no repeat BP measurements within 15 minutes.
- The last repeat BP measurement within 15 minutes is non-severe, and one or more severe hypertension reading occurs between 16 and 60 minutes after the FIRST severe hypertension reading.
- The last repeat BP measurement within 15 minutes is non-severe, and there are no repeat BP measurements between 16 and 60 minutes after the FIRST severe hypertension reading.

Numerator

Inpatient hospitalizations for patients that received antihypertensive medication 60 minutes or less after the FIRST severe hypertension reading.