

Expert to Expert Webinar Series

2025 New Measure Review Webinar for Hospital Harm – Pressure Injury (HH-PI) (CMS826v2)

Webinar Audio and Functionality

Audio is by VOIP only – Use your computer speakers/headphones to listen. There are no dial in lines. Participants are connected in listen-only mode. Feedback or dropped audio are common for live streaming events. Refresh your screen/rejoin.



We will not be recognizing the Raise a Hand or Chat features.

To ask a question, click on the Question Mark icon in the audience toolbar. A panel will open for you to type your question and submit.

The slides are designed to follow Americans with Disabilities Act rules.

New to eCQMs?

Today's content is highly technical and requires a baseline understanding of eCQM logic and concepts

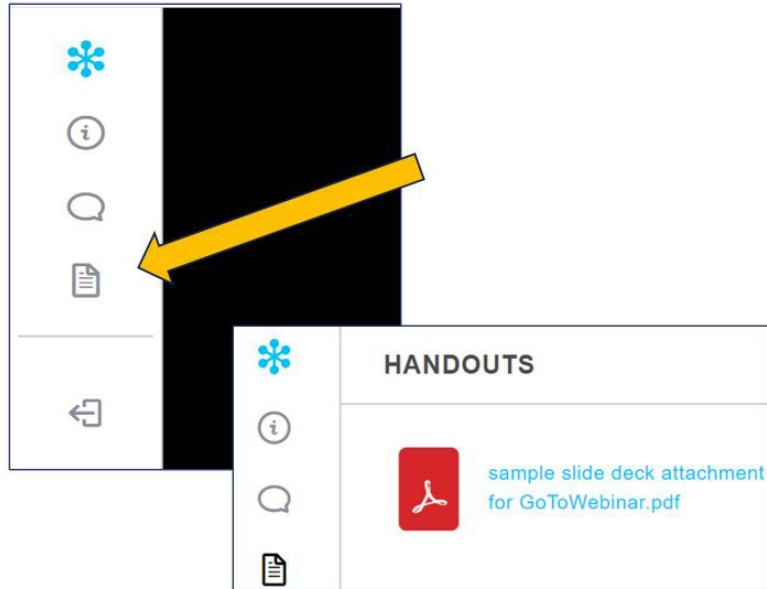
Visit this section of the eCQI Resource Center:

["Get Started with eCQMs"](https://ecqi.healthit.gov/ecqms?qt-tabs_ecqm=tools-resources)

(https://ecqi.healthit.gov/ecqms?qt-tabs_ecqm=tools-resources)



Access the Slides



To access the slides now:

- On left side of your screen, click the icon that depicts a document
- Select the file name and the document will open in a new window
- Print or download the slides.

Slides will also available via this link within 2 weeks of the webinar:
<https://www.jointcommission.org/measurement/quality-measurement-webinars-and-videos/expert-to-expert-webinars>

Webinar approved for 1 Continuing Education (CE) Credit for these entities



- Accreditation Council for Continuing Medical Education (PRA Category 1 credit)
 - American Nurses Credentialing Center
 - American College of Healthcare Executives (1 Qualifying Education Hour)
 - California Board of Registered Nursing
-

CE Requirements



- 1) Individually register for this webinar
- 2) Participate for the entire broadcast
- 3) Complete a post-program evaluation/attestation

For more information on The Joint Commission's continuing education policies, visit this link
<https://www.jointcommission.org/resources/continuing-education-credit-information/>

CE Survey and Certificate

After webinar, survey can be accessed in two ways:

- 1) QR code on final slide
- 2) Link within participant follow-up email



Complete CE survey and **SUBMIT.**

Certificate will appear onscreen. **Print or download PDF Certificate.**

Complete certificate by adding your name and credentials.



Learning Objectives

Locate measure specifications, value sets, measure flow diagrams and technical release notes on the eCQI Resource Center.

Facilitate your organization's implementation of the Hospital Harm – Pressure Injury eCQM for the 2025 calendar year.

Utilize answers regarding common issues/questions for the Hospital Harm – Pressure Injury eCQM to inform 2025 use/implementation.



Topics Not Covered in this Program

Basic eCQM concepts

Topics related to chart abstracted measures

Process improvement efforts related to this measure

eCQM validation



Disclosure Statement

All staff and speakers for this webinar have disclosed that they do not have any conflicts of interest. For example, financial arrangements, affiliations with, or ownership of organizations that provide grants, consultancies, honoraria, travel, or other benefits that would impact the presentation of today's webinar content.

- Susan Funk, MPH, LSSGB, Associate Project Director, Engagement on Quality Improvement Programs (EQIP)
 - Moriah Bauman, MBA, MPH, Advisory Services Analyst
 - Melissa Breth, DNP, RN, NI-BC, Associate Project Director, Clinical Quality Informatics
 - Raquel Belarmino, MSN, RN, Associate Project Director, Clinical Quality Informatics
-

Webinar Agenda

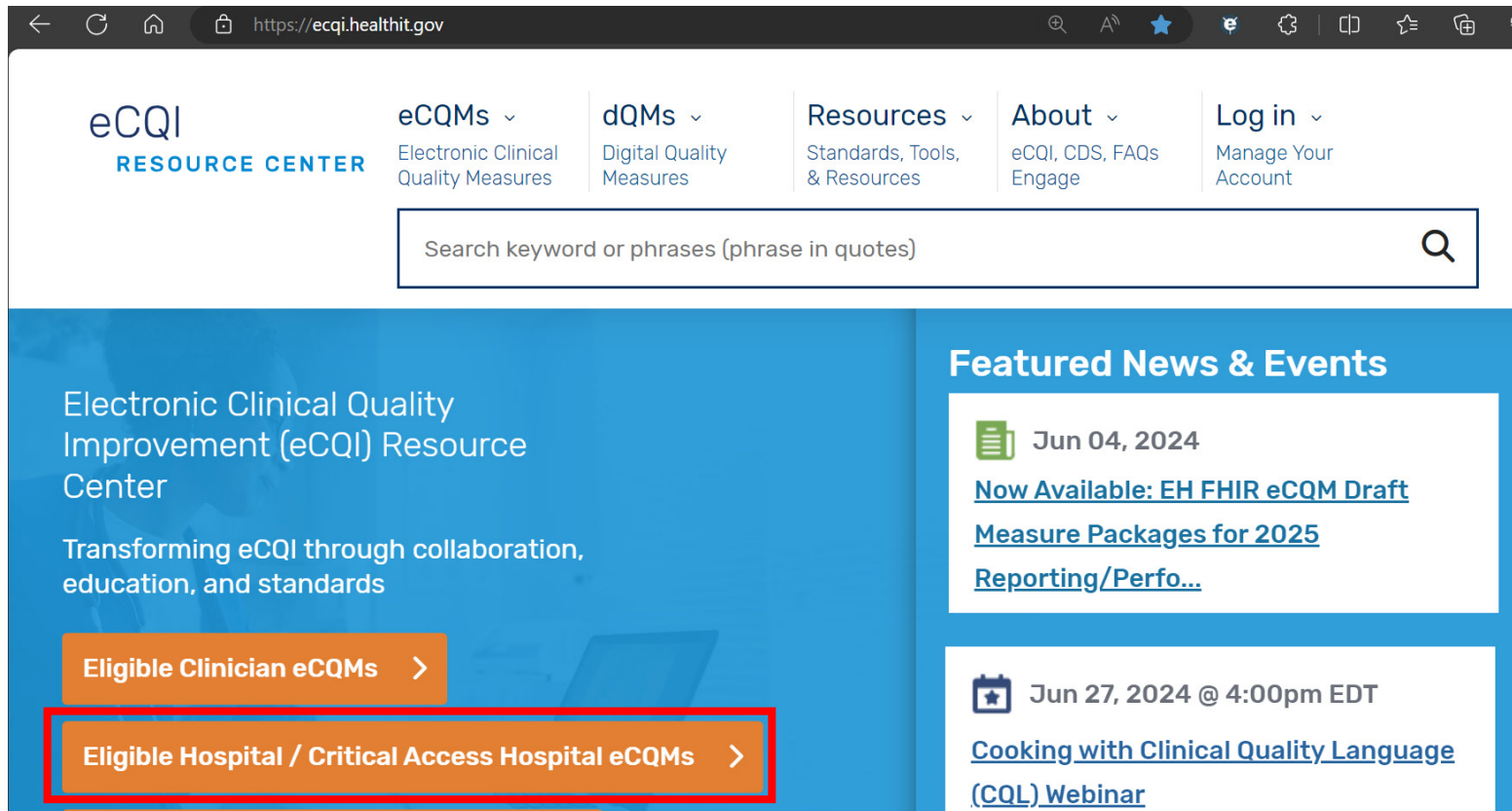
- Highlight how to access eCQI Resource Center navigational demo (measure specifications, value sets, measure flow diagrams and technical release notes)
 - Review the new Hospital Harm – Pressure Injury eCQM
 - Review the measure flow/algorithm
 - Review FAQs
 - Facilitated Audience Q&A Segment
-



eCQM Resources on the eCQI Resource Center

eCQI Resource Center

<https://ecqi.healthit.gov>



The screenshot shows the eCQI Resource Center website. The header includes the eCQI Resource Center logo, navigation links for eCQMs (Electronic Clinical Quality Measures), dQMs (Digital Quality Measures), Resources (Standards, Tools, & Resources), About (eCQI, CDS, FAQs, Engage), and Log in (Manage Your Account). A search bar is present with the placeholder text "Search keyword or phrases (phrase in quotes)". The main content area features a blue banner with the text "Electronic Clinical Quality Improvement (eCQI) Resource Center" and "Transforming eCQI through collaboration, education, and standards". Below the banner are two orange buttons: "Eligible Clinician eCQMs" and "Eligible Hospital / Critical Access Hospital eCQMs", with the latter highlighted by a red rectangle. To the right, a "Featured News & Events" section lists two items: "Jun 04, 2024" with the link "Now Available: EH FHIR eCQM Draft Measure Packages for 2025 Reporting/Perfo..." and "Jun 27, 2024 @ 4:00pm EDT" with the link "Cooking with Clinical Quality Language (CQL) Webinar".

Download and/or View Specifications

- “Human Readable” html
- Value Sets
 - **Value Set Authority Center (VSAC)**
- Data Elements
- eCQM Flow (PDF)
 - **(process flow diagrams)**
- Technical Release Notes (TRNs) (Excel)
- Jira Issue Tracker tickets

For more details, view the video short here:

<https://www.jointcommission.org/measurement/quality-measurement-webinars-and-videos/expert-to-expert-webinars/>

Hospital Harm – Pressure Injury (HH-PI) (CMS826v2)

HH-PI – Adopted into CMS Program

- CMS finalized adoption of HH-PI measure for Hospital Inpatient Quality Reporting and Promoting Interoperability programs through FY 24 Inpatient Prospective Payment System final rule
- Reporting of measure begins with the CY 2025 reporting period/FY 2027 payment determination

HH-PI – Background

Measure Description: The measure assesses the number of inpatient hospitalizations for patients aged 18 and older who suffer the harm of developing a new stage 2, stage 3, stage 4, deep tissue, or unstageable pressure injury

Rationale and Intent:

- Hospital-acquired pressure injuries are serious events and one of the most common patient harms
 - The risk of developing a pressure injury can be reduced through best practices
 - Between 24 to 72 hours can lapse between the precipitating pressure event and the presentation of a pressure injury
 - Measuring patients who develop new pressure injuries while in the hospital setting will allow hospitals to more reliably assess harm reduction efforts and modify their improvement efforts in near real-time
-

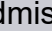
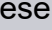
★ 2024 Program Candidate Year vs. 2025 Reporting Year (1)

Measure Components	2024 Program Candidate Year	2025 Reporting Year
CBE Number	Not Applicable	Not Applicable <u>3498e</u>
Description	The proportion of inpatient hospitalizations for patients aged 18 and older who suffer the harm of developing a new stage 2, stage 3, stage 4, deep tissue, or unstageable pressure injury	The proportion <u>measure</u> assesses the number of inpatient hospitalizations for patients aged 18 and older who suffer the harm of developing a new stage 2, stage 3, stage 4, deep tissue, or unstageable pressure injury
Improvement Notation	A lower proportion indicates better quality	A lower proportion <u>measure score</u> indicates better <u>higher</u> quality
Initial Population	Inpatient hospitalizations for patients aged 18 and older	No change
Denominator	Initial population	No change

★ 2024 Program Candidate Year vs. 2025 Reporting Year (2)

Measure Components	2024 Program Candidate Year	2025 Reporting Year
Denominator Exclusions	<p>Inpatient hospitalizations for patients with a deep tissue pressure injury (DTPI) or stage 2, 3, 4 or unstageable pressure injury diagnosis present on admission, i.e., the diagnosis of pressure injury has a Present on Admission indicator = Y yes (Diagnosis was present at time of inpatient admission) or W (clinically undetermined)</p> <p>Inpatient hospitalizations for patients with a DTPI found on exam within 72 hours after the start of the encounter</p> <p>Inpatient hospitalizations for patients with a stage 2, 3, 4, or unstageable pressure injury found on exam within 24 hours after the start of the encounter</p> <p>Inpatient hospitalizations for patients with diagnosis of a COVID-19 infection during the encounter</p>	<p>Inpatient hospitalizations for patients with a DTPI or stage 2, 3, 4 or unstageable pressure injury diagnosis present on admission, i.e., the diagnosis of pressure injury has a Present on Admission indicator = Y yes (Diagnosis was present at time of inpatient admission) or W (clinically undetermined).</p> <p>Inpatient hospitalizations for patients with a DTPI found on exam within 72 hours <u>or less</u> after the start of the encounter.</p> <p>Inpatient hospitalizations for patients with a stage 2, 3, 4, or unstageable pressure injury found on exam within 24 hours <u>or less</u> after the start of the encounter.</p> <p>Inpatient hospitalizations for patients with diagnosis of a COVID-19 infection during the encounter.</p>

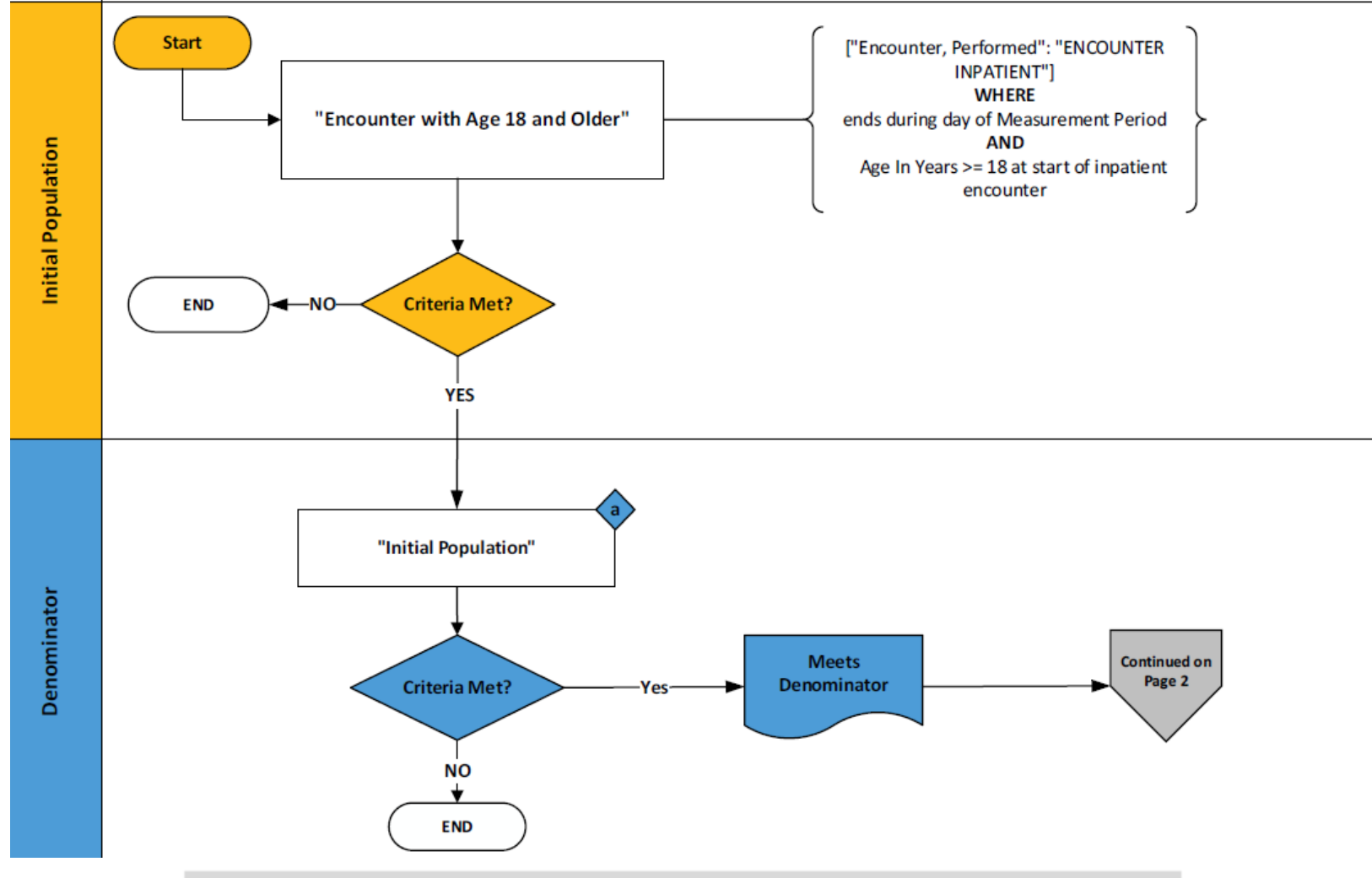
2024 Program Candidate Year vs. 2025 Reporting Year (3)

Measure Components	2024 Program Candidate Year	2025 Reporting Year
Numerator	<p>Inpatient hospitalizations for patients with a new deep tissue pressure injury (DTPI) or stage 2, 3, 4, or unstageable pressure injury, as evidenced by any of the following:</p> <ul style="list-style-type: none"> A diagnosis of DTPI with the DTPI not present on admission, i.e., the diagnosis of DTPI has a Present on Admission indicator = N no (Diagnosis was not present at time of inpatient admission) or U (documentation insufficient to determine if the condition was present at the time of inpatient admission) A diagnosis of stage 2, 3, 4 or unstageable pressure injury with the pressure injury diagnosis not present on admission, i.e., the diagnosis of pressure injury has a Present on Admission indicator = N no (Diagnosis was not present at time of inpatient admission) or U (documentation insufficient to determine if the condition was present at the time of inpatient admission) A DTPI found on exam greater than 72 hours after the start of the encounter A stage 2, 3, 4 or unstageable pressure injury found on exam greater than 24 hours after the start of the encounter 	<p>Inpatient hospitalizations for patients with a new deep tissue pressure injury (DTPI) or stage 2, 3, 4, or unstageable pressure injury, as evidenced by any of the following:</p> <ul style="list-style-type: none"> A diagnosis of DTPI with the DTPI not present on admission, i.e., the diagnosis of DTPI has a Present on Admission indicator = N  (Diagnosis was not present at time of inpatient admission) or U (documentation insufficient to determine if the condition was present at the time of inpatient admission). A diagnosis of stage 2, 3, 4 or unstageable pressure injury with the pressure injury diagnosis not present on admission, i.e., the diagnosis of pressure injury has a Present on Admission indicator = N  (Diagnosis was not present at time of inpatient admission) or U (documentation insufficient to determine if the condition was present at the time of inpatient admission). A DTPI found on exam greater than 72 hours after the start of the encounter. A stage 2, 3, 4 or unstageable pressure injury found on exam greater than 24 hours after the start of the encounter.

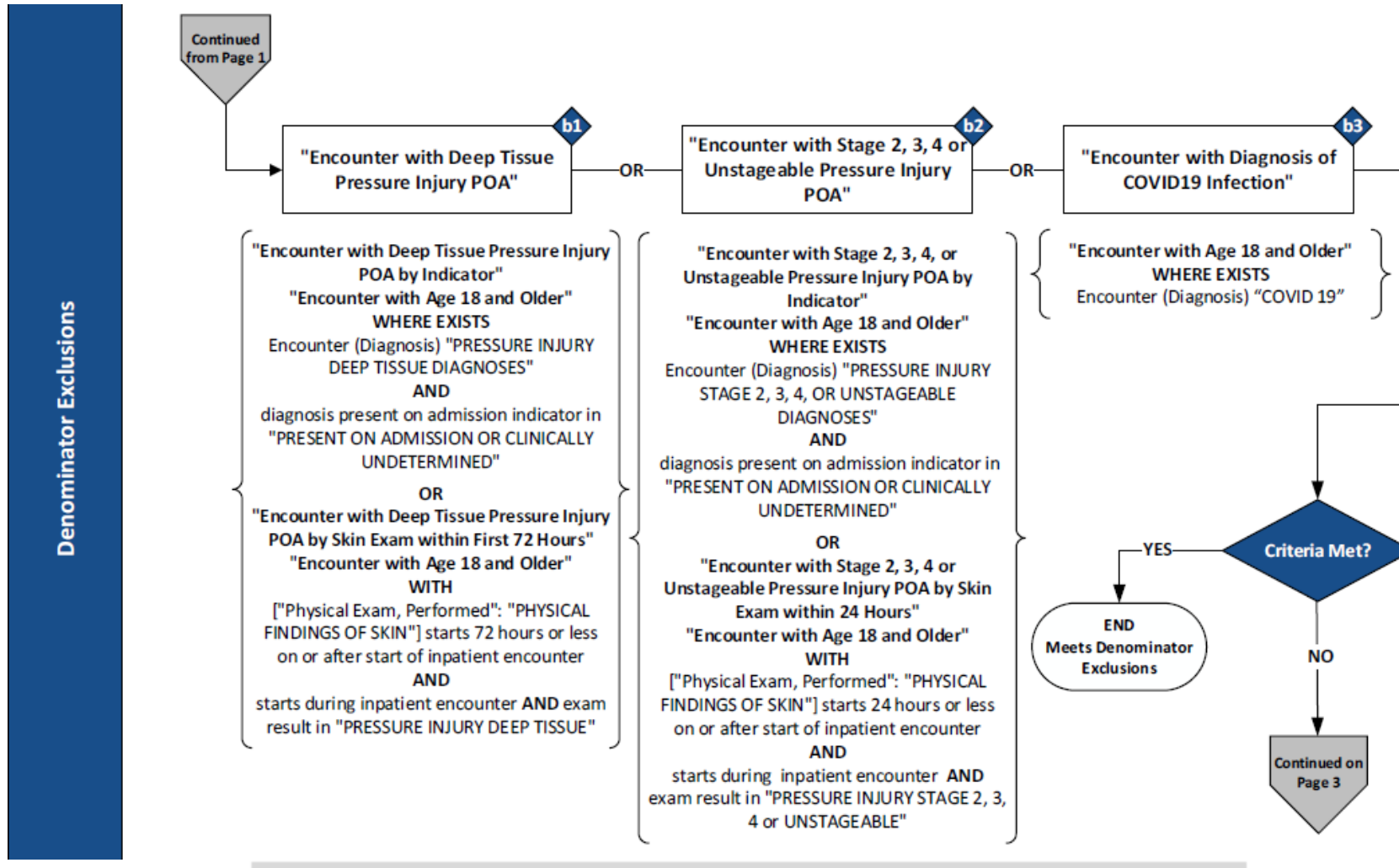
Hospital Harm – Pressure Injury (HH-PI) (CMS826v2)

Measure Flow

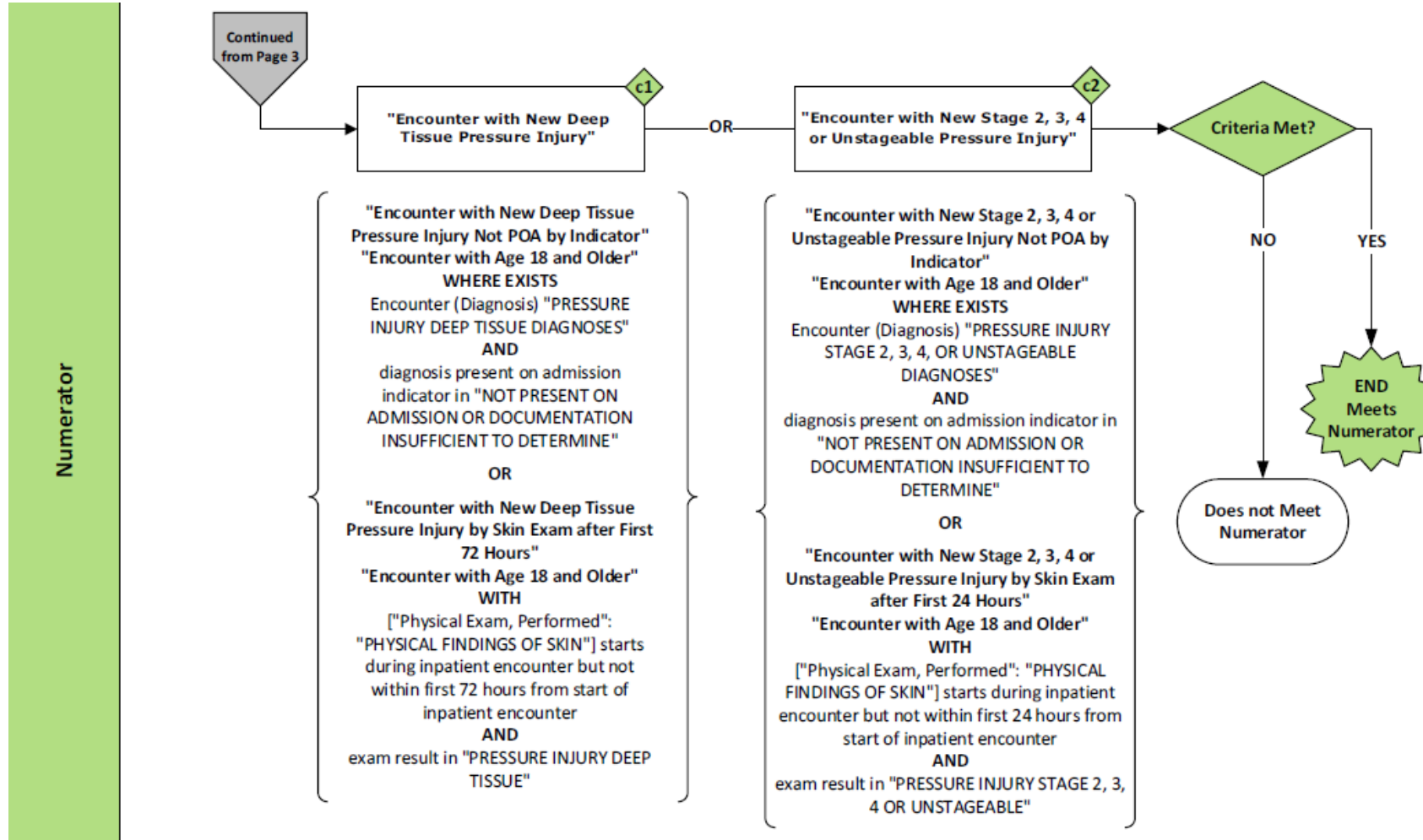
Initial Population and Denominator



Denominator Exclusions



Numerator



Sample calculation

Sample Calculation

$$\text{Performance Rate} = \frac{\text{Numerator (c1 + c2 = 60)}}{\text{Denominator (a = 100) - Denominator Exclusions (b1 + b2 + b3 = 20)}} = 75\%$$

Hospital Harm – Pressure Injury (HH-PI) (CMS826v2)

Logic Detail

HH-PI Initial Population

Inpatient hospitalizations for patients aged 18 and older

Initial Population: “Encounter with Age 18 and Older”

Encounter with Age 18 and Older

["Encounter, Performed": "Encounter Inpatient"] InpatientEncounter
where InpatientEncounter.relevantPeriod ends during day of "Measurement Period"
and AgeInYearsAt(date from start of InpatientEncounter.relevantPeriod) >= 18

HH-PI Denominator

Inpatient hospitalizations for patients aged 18 and older

Denominator: “Initial Population”

HH-PI Denominator Exclusions (1)

Inpatient hospitalizations for patients with a DTPI or stage 2, 3, 4 or unstageable pressure injury diagnosis present on admission, i.e., the diagnosis of pressure injury has a Present on Admission indicator = Y yes (Diagnosis was present at time of inpatient admission) or W (clinically undetermined).

Inpatient hospitalizations for patients with a DTPI found on exam 72 hours or less after the start of the encounter.

Inpatient hospitalizations for patients with a stage 2, 3, 4, or unstageable pressure injury found on exam 24 hours or less after the start of the encounter.

Inpatient hospitalizations for patients with diagnosis of a COVID-19 infection during the encounter.

**Denominator Exclusions: "Encounter with Deep Tissue Pressure Injury POA"
union "Encounter with Stage 2, 3, 4 or Unstageable Pressure Injury POA"
union "Encounter with Diagnosis of COVID19 Infection"**



HH-PI Denominator Exclusions (2)

Denominator Exclusions: "Encounter with Deep Tissue Pressure Injury POA"

Encounter with Deep Tissue Pressure Injury POA

→ "Encounter with Deep Tissue Pressure Injury POA by Indicator"
union "Encounter with Deep Tissue Pressure Injury POA by Skin Exam within First 72 Hours"

Encounter with Deep Tissue Pressure Injury POA by Indicator

"Encounter with Age 18 and Older" InpatientHospitalization EncounterInpatient
where exists (InpatientHospitalization EncounterInpatient.diagnoses DeepPressureInjury
where DeepPressureInjury.code in "Pressure Injury Deep Tissue Diagnoses"
and DeepPressureInjury.presentOnAdmissionIndicator in "Present on Admission or Clinically
Undetermined"
)



HH-PI Denominator Exclusions (3)

Denominator Exclusions: "Encounter with Deep Tissue Pressure Injury POA"

Encounter with Deep Tissue Pressure Injury POA

"Encounter with Deep Tissue Pressure Injury POA by Indicator"

union "Encounter with Deep Tissue Pressure Injury POA by Skin Exam within First 72 Hours"

Encounter with Deep Tissue Pressure Injury POA by Skin Exam within First 72 Hours

"Encounter with Age 18 and Older" InpatientHospitalization EncounterInpatient

with ["Physical Exam, Performed": "Physical findings of Skin"] SkinExam

such that Global."NormalizeInterval" (SkinExam.relevantDatetime, SkinExam.relevantPeriod) starts 72 hours or less on or after start of

Global."HospitalizationWithObservation" (InpatientHospitalization EncounterInpatient)

and Global."NormalizeInterval" (SkinExam.relevantDatetime, SkinExam.relevantPeriod) starts during

Global."HospitalizationWithObservation" (InpatientHospitalization EncounterInpatient)

and SkinExam.result in "Pressure Injury Deep Tissue"



HH-PI Denominator Exclusions (4)

Denominator Exclusions: "Encounter with Stage 2, 3, 4 or Unstageable Pressure Injury POA"

Encounter with Stage 2, 3, 4 or Unstageable Pressure Injury POA

"Encounter with Stage 2, 3, 4, or Unstageable Pressure Injury POA by Indicator"
union "Encounter with Stage 2, 3, 4 or Unstageable Pressure Injury POA by Skin Exam within 24 Hours"

Encounter with Stage 2, 3, 4, or Unstageable Pressure Injury POA by Indicator

"Encounter with Age 18 and Older" InpatientHospitalization EncounterInpatient
where exists (InpatientHospitalization EncounterInpatient.diagnoses
Stage234UnstageablePressureInjury
where Stage234UnstageablePressureInjury.code in "Pressure Injury Stage 2, 3, 4, or Unstageable
Diagnoses"
and Stage234UnstageablePressureInjury.presentOnAdmissionIndicator in "Present on
Admission or Clinically Undetermined"
)



HH-PI Denominator Exclusions (5)

Denominator Exclusions: "Encounter with Stage 2, 3, 4 or Unstageable Pressure Injury POA"

Encounter with Stage 2, 3, 4 or Unstageable Pressure Injury POA

"Encounter with Stage 2, 3, 4, or Unstageable Pressure Injury POA by Indicator"

→ union "Encounter with Stage 2, 3, 4 or Unstageable Pressure Injury POA by Skin Exam within 24 Hours"

Encounter with Stage 2, 3, 4 or Unstageable Pressure Injury POA by Skin Exam within 24 Hours

"Encounter with Age 18 and Older" InpatientHospitalization EncounterInpatient

with ["Physical Exam, Performed": "Physical findings of Skin"] SkinExam

such that Global."NormalizeInterval" (SkinExam.relevantDatetime, SkinExam.relevantPeriod) starts 24 hours or less on or after start of Global."HospitalizationWithObservation" (InpatientHospitalization EncounterInpatient)

and Global."NormalizeInterval" (SkinExam.relevantDatetime, SkinExam.relevantPeriod) starts during Global."HospitalizationWithObservation" (InpatientHospitalization EncounterInpatient)

and SkinExam.result in "Pressure Injury Stage 2, 3, 4 or Unstageable"



HH-PI Denominator Exclusions (6)

Denominator Exclusions: "Encounter with Diagnosis of COVID19 Infection"

Encounter with Diagnosis of COVID19 Infection

"Encounter with Age 18 and Older" ~~InpatientHospitalization~~ EncounterInpatient
 where exists (~~InpatientHospitalization~~ EncounterInpatient.diagnoses EncounterDiagnosis
 where EncounterDiagnosis.code in "COVID 19"
)



HH-PI Numerator (1)

Inpatient hospitalizations for patients with a new deep tissue pressure injury (DTPI) or stage 2, 3, 4, or unstageable pressure injury, as evidenced by any of the following:

A diagnosis of DTPI with the DTPI not present on admission, i.e., the diagnosis of DTPI has a Present on Admission indicator = N (Diagnosis was not present at time of inpatient admission) or U (documentation insufficient to determine if the condition was present at the time of inpatient admission).

A diagnosis of stage 2, 3, 4 or unstageable pressure injury with the pressure injury diagnosis not present on admission, i.e., the diagnosis of pressure injury has a Present on Admission indicator = N (Diagnosis was not present at time of inpatient admission) or U (documentation insufficient to determine if the condition was present at the time of inpatient admission).

A DTPI found on exam greater than 72 hours after the start of the encounter.

A stage 2, 3, 4 or unstageable pressure injury found on exam greater than 24 hours after the start of the encounter.

**Numerator: "Encounter with New Deep Tissue Pressure Injury ~~Not-POA~~"
union "Encounter with New Stage 2, 3, 4 or Unstageable Pressure Injury ~~Not-POA~~"**



HH-PI Numerator (2)

Numerator: "Encounter with New Deep Tissue Pressure Injury **Not POA**"

Encounter with New Deep Tissue Pressure Injury **Not POA**

→ "Encounter with New Deep Tissue Pressure Injury Not POA by Indicator"
union "Encounter with New Deep Tissue Pressure Injury by Skin Exam after First 72 Hours"

Encounter with New Deep Tissue Pressure Injury Not POA by Indicator

"Encounter with Age 18 and Older" InpatientHospitalization EncounterInpatient
where exists (InpatientHospitalization EncounterInpatient.diagnoses DeepPressureInjury
where DeepPressureInjury.code in "Pressure Injury Deep Tissue Diagnoses"
and DeepPressureInjury.presentOnAdmissionIndicator in "Not Present On Admission or
Documentation Insufficient to Determine"
)



HH-PI Numerator (3)

Numerator: "Encounter with New Deep Tissue Pressure Injury ~~Not POA~~"

Encounter with New Deep Tissue Pressure Injury ~~Not POA~~

"Encounter with New Deep Tissue Pressure Injury Not POA by Indicator"

union "Encounter with New Deep Tissue Pressure Injury by Skin Exam after First 72 Hours"

Encounter with New Deep Tissue Pressure Injury by Skin Exam after First 72 Hours

"Encounter with Age 18 and Older" ~~InpatientHospitalization~~ EncounterInpatient

let hospitalizationPeriod: Global."HospitalizationWithObservation" (~~InpatientHospitalization~~ EncounterInpatient)

with ["Physical Exam, Performed": "Physical findings of Skin"] SkinExam

such that Global."NormalizeInterval" (SkinExam.relevantDatetime, SkinExam.relevantPeriod)

starts during Interval[start of hospitalizationPeriod + 72 hours, end of hospitalizationPeriod]

and SkinExam.result in "Pressure Injury Deep Tissue"



HH-PI Numerator (4)

Numerator: "Encounter with New Stage 2, 3, 4 or Unstageable Pressure Injury **Not POA**"

Encounter with New Stage 2, 3, 4 or Unstageable Pressure Injury **Not POA**

→ "Encounter with New Stage 2, 3, 4 or Unstageable Pressure Injury Not POA by Indicator"
union "Encounter with New Stage 2, 3, 4 or Unstageable Pressure Injury by Skin Exam after First 24 Hours"

Encounter with New Stage 2, 3, 4 or Unstageable Pressure Injury Not POA by Indicator

"Encounter with Age 18 and Older" InpatientHospitalization EncounterInpatient
where exists (InpatientHospitalization EncounterInpatient.diagnoses Stage234UnstageablePressureInjury
where Stage234UnstageablePressureInjury.code in "Pressure Injury Stage 2, 3, 4, or Unstageable
Diagnoses"
and Stage234UnstageablePressureInjury.presentOnAdmissionIndicator in "Not Present On Admission
or Documentation Insufficient to Determine"
)



HH-PI Numerator (5)

Numerator: "Encounter with New Stage 2, 3, 4 or Unstageable Pressure Injury ~~Not POA~~"

Encounter with New Stage 2, 3, 4 or Unstageable Pressure Injury ~~Not POA~~

"Encounter with New Stage 2, 3, 4 or Unstageable Pressure Injury Not POA by Indicator"

union "Encounter with New Stage 2, 3, 4 or Unstageable Pressure Injury by Skin Exam after First 24 Hours"

Encounter with New Stage 2, 3, 4 or Unstageable Pressure Injury by Skin Exam after First 24 Hours

"Encounter with Age 18 and Older" ~~InpatientHospitalization~~ EncounterInpatient

let hospitalizationPeriod: Global."HospitalizationWithObservation" (~~InpatientHospitalization~~

EncounterInpatient)

with ["Physical Exam, Performed": "Physical findings of Skin"] SkinExam

such that Global."NormalizeInterval" (SkinExam.relevantDatetime, SkinExam.relevantPeriod) starts during

Interval[start of hospitalizationPeriod + 24 hours, end of hospitalizationPeriod]

and SkinExam.result in "Pressure Injury Stage 2, 3, 4 or Unstageable"

Resources

eCQI Resource Center

CMS EH Measures

<https://ecqi.healthit.gov/eligible-hospital/critical-access-hospital-eCQMs>

Get Started with eCQMs

https://ecqi.healthit.gov/ecqms?qt-tabs__ecqm=education

Teach Me Clinical Quality Language (CQL) Video Series -

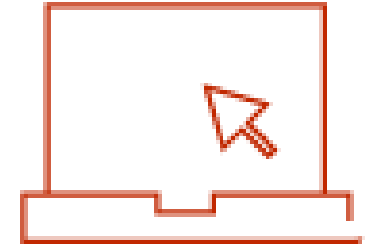
https://ecqi.healthit.gov/cql?qt-tabs__cql=2

Hospitalization with Observation -

https://www.youtube.com/watch?v=3yqwOU2XcZM&ab_channel=CMSSHSGov

What is a Value Set -

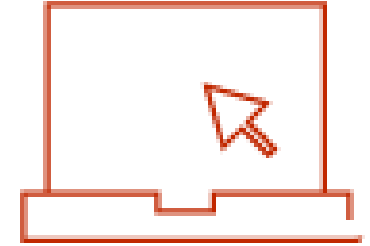
<https://register.gotowebinar.com/recording/4766956164118938369>



Resources (2)

Value Set Authority Center (VSAC) Support -

<https://www.nlm.nih.gov/vsac/support/index.html>



Pioneers In Quality -

<https://www.jointcommission.org/measurement/pioneers-in-quality/>

Expert to Expert -

<https://www.jointcommission.org/measurement/quality-measurement-webinars-and-videos/expert-to-expert-webinars/>

ASTP/ONC Issue Tracking System - <https://oncprojecttracking.healthit.gov/>

Live Q&A Segment



- Please submit questions via the question pane
- Click the Question mark icon in the toolbar
- Type and submit your question
- Include slide reference number when possible
- All questions **not answered verbally** during the live event will be addressed in a **written follow-up Q&A document**
- The follow-up document will be posted to the Joint Commission website several weeks after the live event

Webinar recording

All Expert to Expert webinar recording links, slides, transcripts, and Q&A documents can be accessed within several weeks of the live event on the Joint Commission's webpage via this link:

<https://www.jointcommission.org/measurement/quality-measurement-webinars-and-videos/expert-to-expert-webinars/>



Our Websites: ▾

Search this site.

Expert to Expert Webinars

The Joint Commission's Expert to Expert (EtoE) Webinar Series provides a deep-dive into measure intent, logic, and other clinical/technical aspects of electronic clinical quality measures (eCQMs) to assist hospitals and health systems in their efforts to improve eCQM data use for quality improvement. This series incorporates expertise from Joint Commission and other key stakeholders.

Notes: After clicking the link to view a recording, you will be taken to the event landing page and will be required to enter registration fields before the recording begins.

Clicking the links for the follow-up documents may automatically download the PDF rather than open a new internet browser window.

Expert to Expert
Status

☐ EtoE Current 7
☐ EtoE Past 1

Results 1-8 of 8 in 0.07 seconds

RESOURCE

Webinar CE Evaluation Survey and Certificate



- Scan QR code on next slide to access survey now, or
- Use link from automated email to access survey.

We use your feedback to inform future content and assess educational program quality.

Survey closes in 2 weeks.



CE Certificate Distribution

Complete the survey, **SUBMIT**, then print or download the blank PDF CE Certificate shown on screen or access the link via the follow-up email.

Complete certificate by adding your name and credentials.

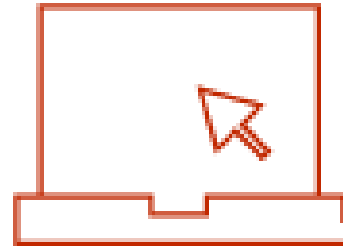
Thank you for attending!



Scan QR code
to access CE
Attestation and
Evaluation
Survey



pioneersinquality@jointcommission.org



<https://www.jointcommission.org/measurement/quality-measurement-webinars-and-videos/expert-to-expert-webinars/>

Acronyms

Acronym	Meaning
CBE	Consensus-Based Entity
CMS	Centers for Medicare& Medicaid Services
CY	Calendar Year
eCQM	Electronic Clinical Quality Measure
DTPI	Deep Tissue Pressure Injury
EHR	Electronic Health Record
FY	Fiscal Year
PI	Pressure Injury