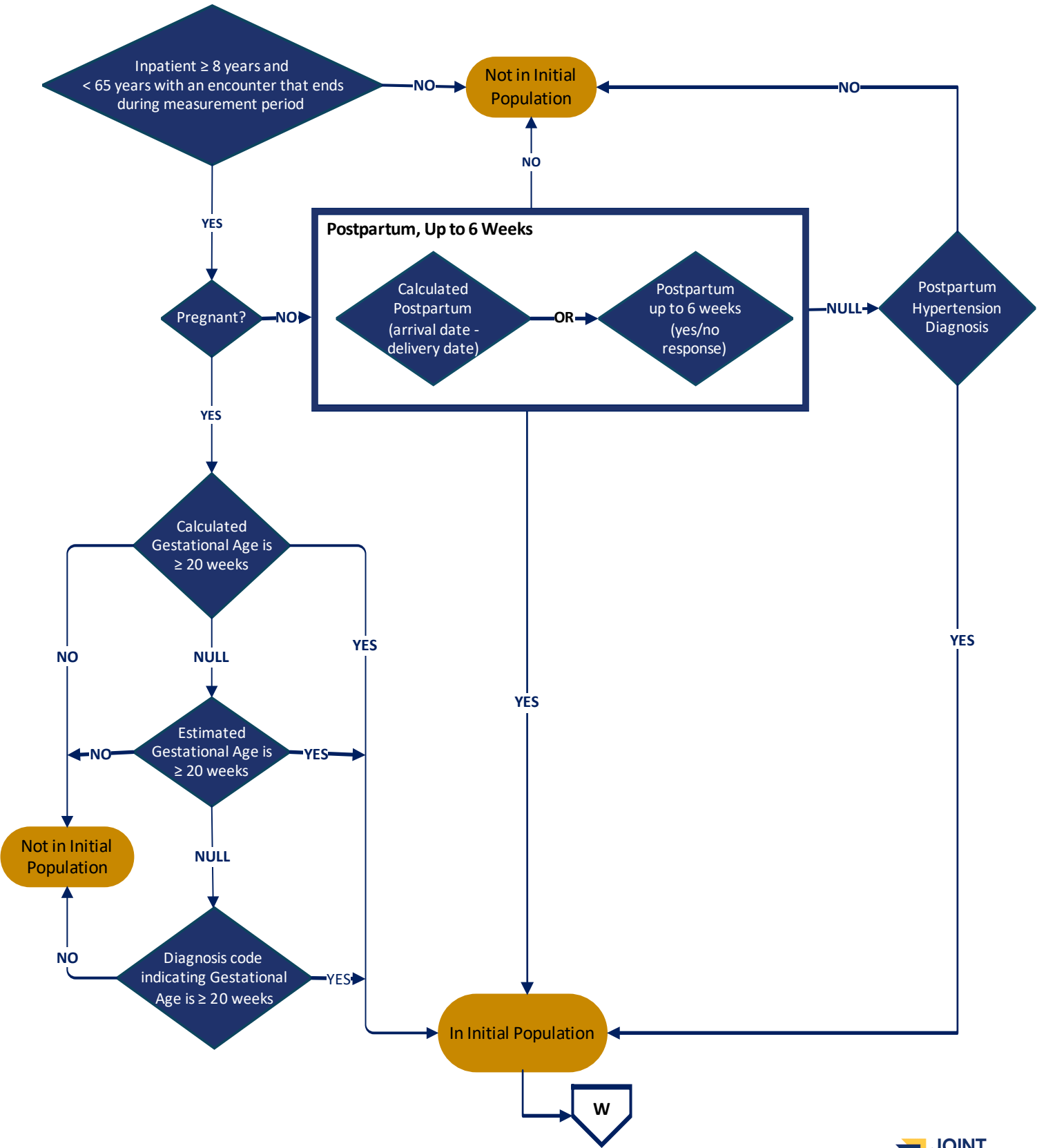
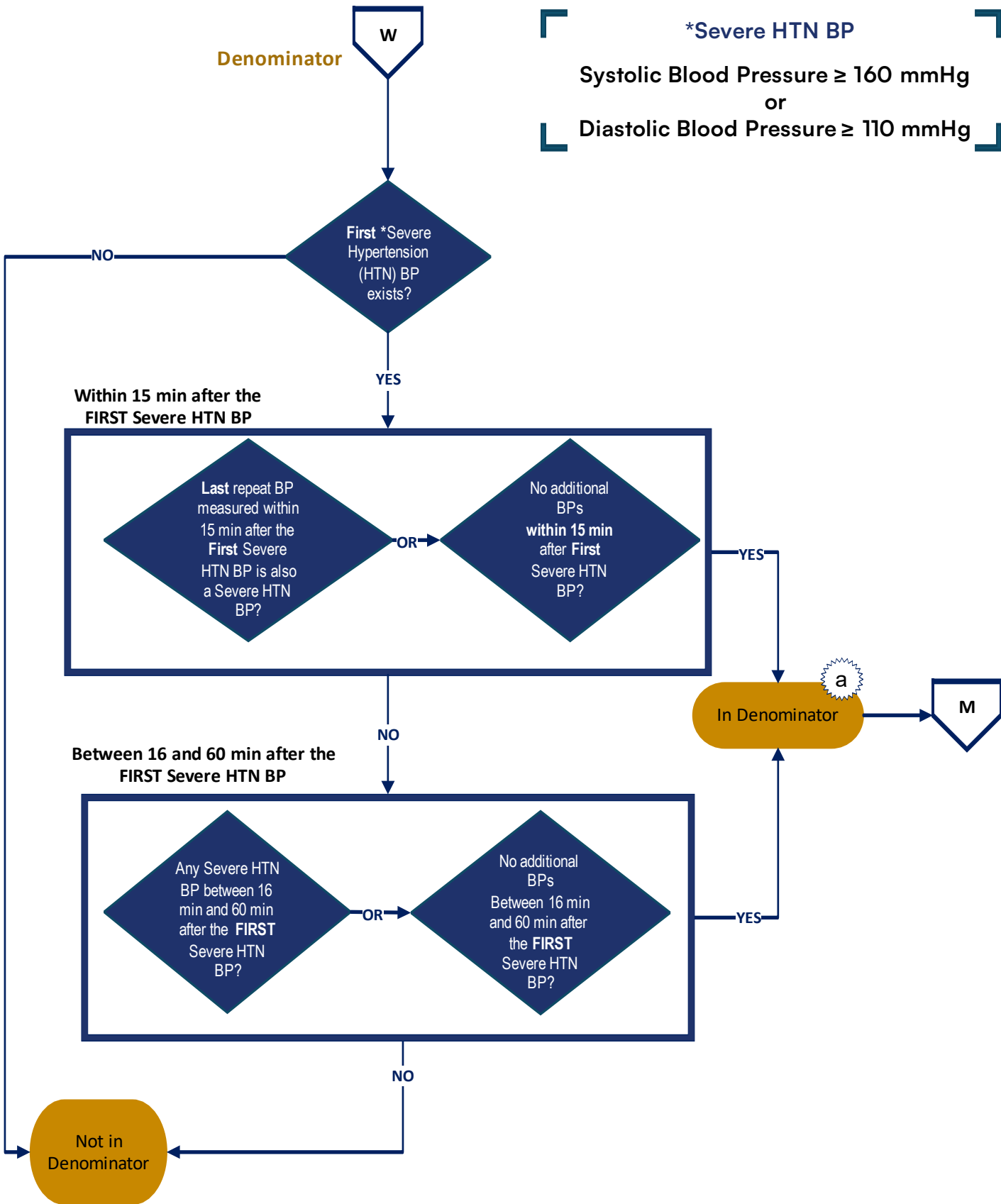


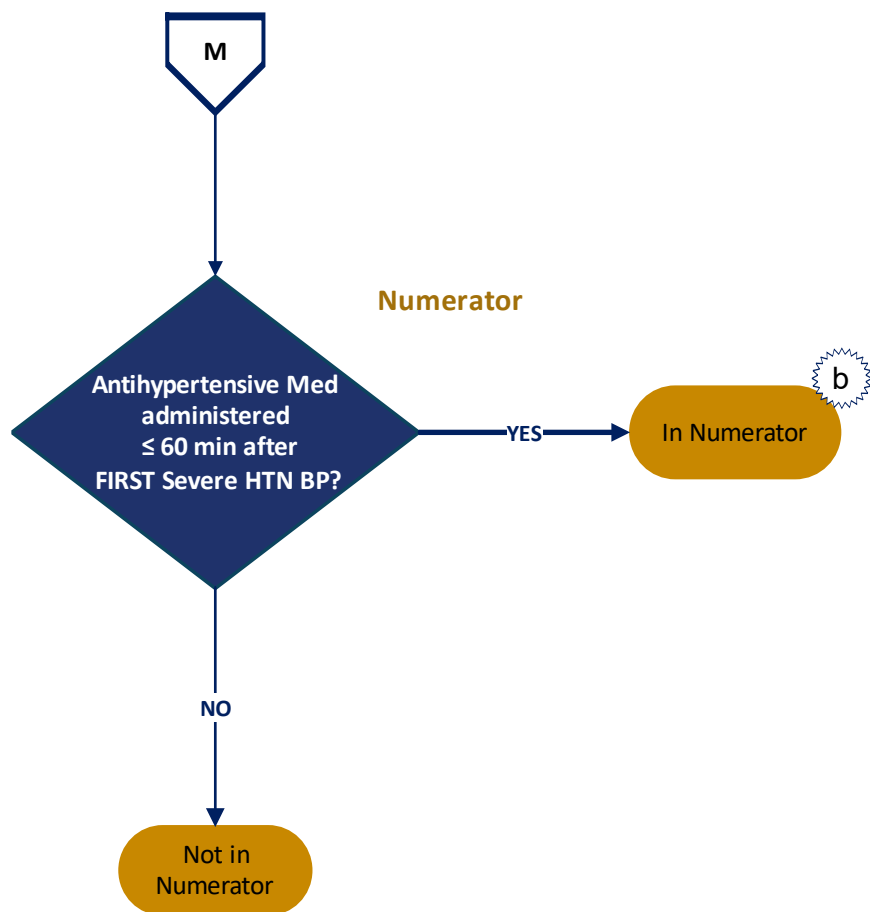
Initial Population





### Timely Treatment of Severe Hypertension

Pregnant or postpartum patients with confirmed severe hypertension (systolic  $\geq 160$  mmHg or diastolic  $\geq 110$  mmHg) who received approved antihypertensive medications 60 minutes or less from onset of the FIRST severe hypertension episode.



### Sample Calculation

$$\text{Performance Rate} = \frac{\text{Numerator } (b = 90 \text{ patients})}{\text{Denominator } (a = 100 \text{ patients})} = 90\%$$

## Measure Flow Narrative

### Measure Description

Pregnant or postpartum patients with confirmed severe hypertension (systolic  $\geq 160$  mmHg or diastolic  $\geq 110$  mmHg) who received approved antihypertensive medications 60 minutes or less from onset of the FIRST severe hypertension episode.

### Initial Population

Inpatient hospitalizations for patients age greater than or equal to 8 years and less than 65 admitted to the hospital for inpatient acute care with a discharge date that ends during the measurement period and are either pregnant with a gestational age greater than or equal to 20 weeks or postpartum, up to 6 weeks after delivery.

### Denominator

Inpatient hospitalizations with a severe hypertension reading (systolic  $\geq 160$  mmHg or diastolic  $\geq 110$  mmHg) and any of the following conditions related to the FIRST severe hypertension reading:

- The last repeat blood pressure (BP) measurement within 15 minutes is another severe hypertension reading.
- There are no repeat BP measurements within 15 minutes.
- The last repeat BP measurement within 15 minutes is non-severe, and one or more severe hypertension reading occurs between 16 and 60 minutes after the FIRST severe hypertension reading.
- The last repeat BP measurement within 15 minutes is non-severe, and there are no repeat BP measurements between 16 and 60 minutes after the FIRST severe hypertension reading.

### Numerator

Inpatient hospitalizations for patients that received antihypertensive medication 60 minutes or less after the FIRST severe hypertension reading.