



Accreditation 360: 2026 ORYX Performance Measurement Updates for Hospitals

On Demand Webinar

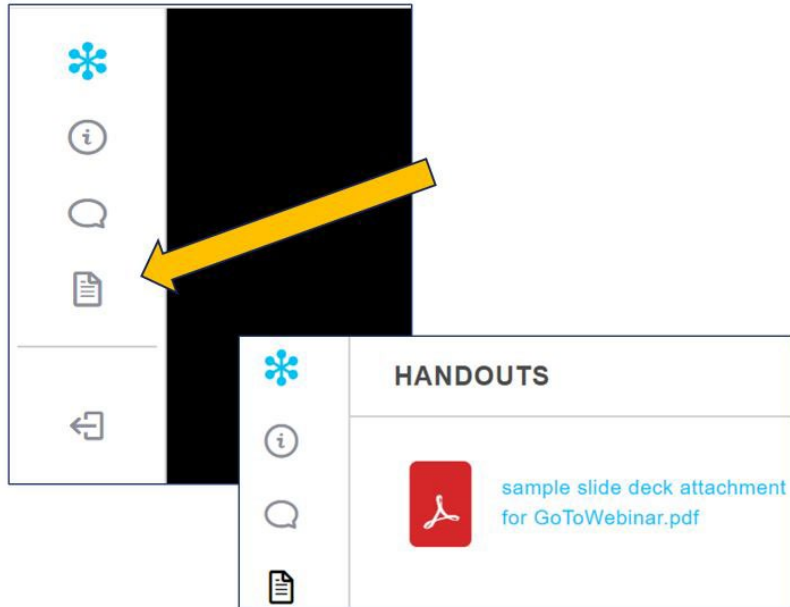
September 2025
CE Credit Available for
6 weeks after release

On Demand Webinar Platform — Functionality

- Computer speakers or headphones required
- Feedback or dropped audio are common for streaming video.
Tip: refresh your screen.
- You can pause the play back.
- You can return and replay the video; use the access link from registration confirmation email
- Recording is captioned
- Slides designed to follow Americans with Disabilities Act rules



Access the Slides



- Click document icon in the navigation pane
- Select file name
- Document will open in a new window
- Print or download

After CE period expires, slides remain accessible here:

www.jointcommission.org/en-us/knowledge-library/support-center/measurement/quality-measurement-webinars-videos

Continuing Education Information

All relevant information about Continuing Education Credit can be found in attachment provided:

- Entities providing credit
- Requirements to earn credit
- Survey/attestation and Certificate



Credit available for this On Demand webinar for 6 weeks following release.

Joint Commission maintains a participant's privacy and confidentiality per organizational policy. For information on Joint Commission's continuing education policies, visit this link

<https://www.jointcommission.org/en-us/products-and-services/continuing-education/continuing-education-credit-information>

Participant Learning Objectives



- Describe 2026 ORYX® chart-abstracted and eCQM performance measurement requirements for hospital accreditation.
- Determine 2026 ORYX policies applicable to your organization.
- Locate available resources regarding ORYX measurement requirements.

Disclosure Statement

All staff and subject matter experts have disclosed that they do not have any conflicts of interest. For example, financial arrangements, affiliations with, or ownership of organizations that provide grants, consultancies, honoraria, travel, or other benefits that would impact the presentation of this webinar content.



Subject Expert and Scope

Subject Matter Expert



Michelle Dardis, MSN, MBA, RN
Senior Director

Scope of Webinar



- **Includes:**

- Overview of Joint Commission ORYX program
- Calendar Year 2026 ORYX Updates
- ORYX requirements by organization type
- Joint Commission Measurement resources

- **Excludes:**

- Measure requirements for certification
- Direct Data Submission Platform application

Overview of Joint Commission ORYX program

ORYX Reporting Overview



Performance Measurement & Feedback

- Measurement data are directly reported to Joint Commission via the DDSP
- Joint Commission experts analyze performance
- Quality performance data are reported confidentially via Accelerate PI dashboards on JC Connect
- Data are applied to continuous improvement and the survey process

Programs with ORYX Requirements

ORYX requirements are specific to the accreditation program



Hospital Accreditation Program (HAP)

- Further refined by facility size:
 - Large Hospitals with ≥ 26 Licensed beds OR $\geq 50,000$ Outpatient visits
 - Small Hospitals with < 26 Licensed beds AND $< 50,000$ Outpatient visits
- And services provided (Obstetric)



Critical Access Hospital (CAH)



Freestanding Psychiatric Hospital (HAP Psych)

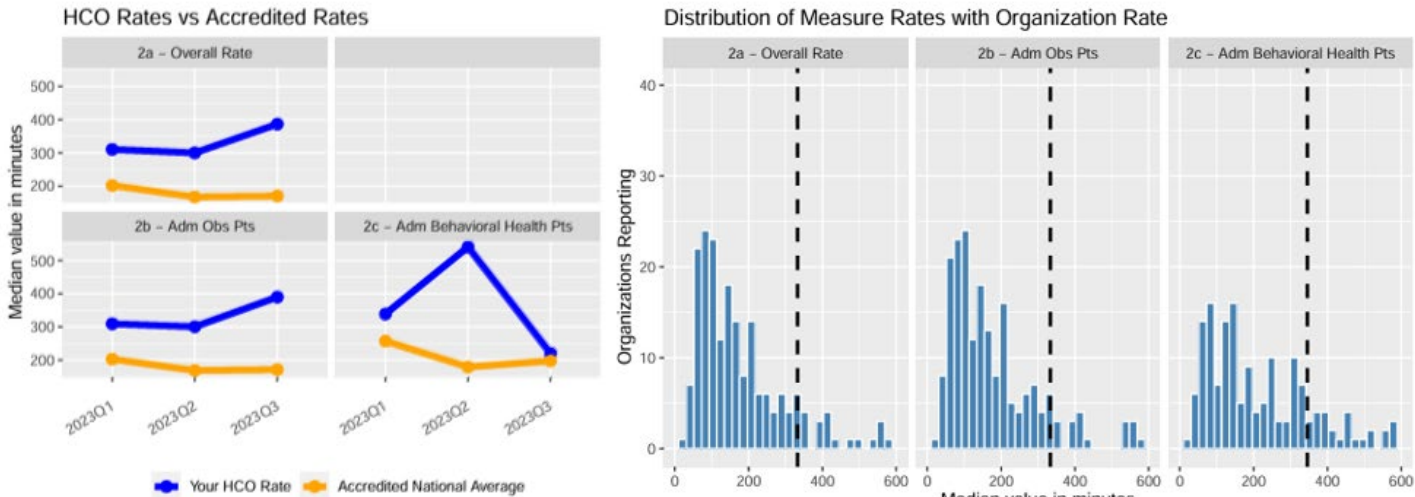
Confidential Measure Reports

Accelerate PI™ Dashboard - ORYX reports

Accelerate PI (Performance Improvement)

Designed to help healthcare organizations quickly identify areas where their performance is lagging or leading. For each measure, the dashboard shows the organization's performance compared to national, state, and Joint Commission-accredited organization averages.

Measure Reporting Period	2022Q4 - 2023Q3	2022Q4 - 2023Q3	2022Q4 - 2023Q3
Stratum	2a - Overall Rate	2b - Adm Obs Pts	2c - Adm Behavioral Health Pts
Total Number of HCOs Reporting	198	198	182
Reporting Period Rate	332.3	333.1	346.0
National Rate	189.9	191.2	218.6
National Median	146.4	147.9	212.4
HCO Percentile	12	13	28



Confidential Measure Reports

Quality Measurement Trends and Benchmarks Report

Quality Measurement Trends and Benchmarks Report

Supports benchmarking efforts by offering percentile rankings and other comparative data for all measures submitted to Joint Commission as part of the ORYX program. It also helps identify trends in quality measurement over time, providing insights into areas of improvement or decline.

National Hospital eCQM Measure Rates by Year

Measure	Measure Description	2021 National Rate	2022 National Rate	2023 National Rate
eHH-01*	Hospital Harm - Severe Hypoglycemia	NA	NA	1.1%
eHH-02*	Hospital Harm - Severe Hyperglycemia	NA	NA	8.5%
ePC-01*	Elective Delivery	20.6%	27.1%	25.3%
ePC-02**	Cesarean Birth	26.1%	25.0%	24.2%
ePC-05	Exclusive breast milk feeding during the newborn's entire hospitalization.	51.9%	56.5%	54.6%
ePC-06.0*	Unexpected Complications in Term Newborns - Overall Rate	74.7	48.1	36.1
ePC-06.1*	Unexpected Complications in Term Newborns - Severe Complications	38.0	23.5	18.8
ePC-06.2*	Unexpected Complications in Term Newborns - Moderate Complications	36.7	24.5	17.3

CY2026 ORYX Updates

Streamlined Requirements

ORYX is a national program that tracks and improves healthcare performance as part of Joint Commission accreditation. As of 2026, ORYX requirements will be streamlined to include fewer required and optional measures.

Why?

To put focus on the most critical patient safety opportunities, healthcare organizations have asked for more tailored measures based on the services provided by the healthcare organization

Reporting aligned with CMS and state requirements

Reduced measurement burden

What?

The changes are being implemented through:

- **Defined measurement aims** in two priority areas: perinatal care and patient safety
- **Reduced optionality** in the measure set
- **Improved robustness of the data set**
- **Enhanced infrastructure**, including updates to the data submission platform and analytics products

Simplified Reporting

2026 Requirements		
Maternal Health:	Patient Safety:	Psychiatric Care:
<ul style="list-style-type: none">• Severe Obstetric Complications• Potentially Preventable (NTSV) Cesarean Births• Unexpected Complications in Term Newborns• Timely Treatment of Severe Hypertension (optional; available mid-2026)	<ul style="list-style-type: none">• Hospital Harm: Severe Hypoglycemia• Hospital Harm: Severe Hyperglycemia	<ul style="list-style-type: none">• HBIPS-2: Hours of Physical Restraint Use• HBIPS-3: Hours of Seclusion Use

Key Program Updates

All hospital types will report fewer measures

	2025	2026
	Total # Required Measures	Total # Required Measures
Large Acute Care Hospital with OB	6	5
Large Acute Care Hospital with no OB	4	2
Small Acute Care Hospitals	3	2
Critical Access Hospitals	3	2
Free Standing Psychiatric Hospitals	3	2

Reduced Measure Burden and Optionality

Electronic Clinical Quality Measures (eCQMs) that will not be collected in 2026:

Electronic Clinical Quality Measures (eCQMs):

- Safe Use of Opioids
- OP-ExRad
- OP-40
- GMCS
- HH-PI
- HH-ORAE
- STK-2
- STK-3
- STK-5
- VTE-1
- VTE-2

Reduced Measure Burden and Optionality

Chart-Abstracted Measures that will not be collected in 2026 and NHSN requirements suspended:

Chart-Abstracted Measures		NHSN Group
<ul style="list-style-type: none">• ED-1• ED-2• IMM-2• OP-18• OP-23• PC-01	<ul style="list-style-type: none">• PC-05• SDOH-1• SDOH-2• SUB-2• SUB-2• TOB-3	<ul style="list-style-type: none">• NHSN group participation will not be required for 2026. NHSN is a valuable data source and will be considered for future program requirements.

New Measure Coming in CY2026



Timely Treatment of Severe Hypertension

- Hypertensive disorders of pregnancy are among the leading causes of pregnancy-related deaths in the United States
- This optional measure will support hospitals committed to reducing complications and death related to hypertensive disorders and severe hypertensive episodes

2026 ORYX Requirements by organization type

2026 ORYX Requirements

[Large] Hospitals (HAP) with ≥ 26 Licensed beds OR $\geq 50,000$ Outpatient visits AND Provide Obstetrical Services

Required eCQMs

- HH-HYPO: Hospital Harm: Hypoglycemia
- HH-HYPER: Hospital Harm: Hyperglycemia
- PC-02: Potentially preventable (NTSV) cesarean births
- PC-06: Unexpected complications in term newborns*
- PC-07: Severe Obstetric Complications

Optional eCQMs

- PC-08: Timely Treatment of Severe Hypertension

Available Chart-abstracted Measures

- PC-06: Unexpected complications in term newborns*
(*organizations can submit PC-06 as a chart-abstracted measure instead of an eCQM)

[HAP Large] Hospitals with ≥ 26 Licensed beds OR $\geq 50,000$ Outpatient visits AND Provide Obstetrical Services	
REQUIRED MEASURES: The following five measures are required:	
PC-02 (eCQM)	Potentially preventable (NTSV) cesarean births
PC-06 (eCQM or chart-abstracted):	Unexpected Complications in Term Newborns
PC-07 (eCQM)	Severe Obstetric Complications
HH-HYPO (eCQM)	Hospital Harm—Severe Hypoglycemia Measure
HH-HYPER (eCQM)	Hospital Harm—Severe Hyperglycemia Measure
OPTIONAL: Available optional measures may be supported if they are applicable to patient population / services offered:	
PC-08 (eCQM):	Timely Treatment of Severe Hypertension

Large Hospitals 2026 ORYX Requirements

[Large] Hospitals (HAP) with ≥ 26 Licensed beds OR $\geq 50,000$ Outpatient visits AND do NOT provide Obstetrical Services

Required eCQMs

- HH-HYPO: Hospital Harm: Hypoglycemia
- HH-HYPER: Hospital Harm: Hyperglycemia

Optional eCQMs

- none

Available Chart-abstracted Measures

- none

<i>[HAP Large] Hospitals with ≥ 26 Licensed beds OR $\geq 50,000$ Outpatient visits AND DO NOT Provide Obstetrical Services</i>
REQUIRED MEASURES: The following two measures are required:
HH-HYPO (eCQM) Hospital Harm—Severe Hypoglycemia Measure
HH-HYPER (eCQM) Hospital Harm—Severe Hyperglycemia Measure
OPTIONAL: Available optional measures may be supported if they are applicable to patient population / services offered:
none applicable for CY2026

Small and Critical Access Hospitals 2026 ORYX Requirements

[Small] Hospitals (HAP) with <26 Licensed beds AND <50,000 Outpatient visits

Critical Access Hospitals (CAH)

Required eCQMs

- HH-HYPO: Hospital Harm: Hypoglycemia
- HH-HYPER: Hospital Harm: Hyperglycemia

Optional eCQMs

- PC-02: Potentially preventable (NTSV) cesarean births
- PC-06: Unexpected complications in term newborns
- PC-07: Severe Obstetric Complications
- PC-08: Timely Treatment of Severe Hypertension

Available Chart-abstracted Measures

- PC-06: Unexpected complications in term newborns

[HAP Small] Hospitals with <26 Licensed beds AND < 50,000 Outpatient visits

REQUIRED MEASURES: The following two measures are required:

HH-HYPO (eCQM) Hospital Harm—Severe Hypoglycemia Measure

HH-HYPER (eCQM) Hospital Harm—Severe Hyperglycemia Measure

OPTIONAL: Available optional measures may be supported if they are applicable to patient population / services offered:

PC-02 (eCQM) Potentially preventable (NTSV) cesarean births

PC-06 (eCQM or chart-abstracted): Unexpected Complications in Term Newborns

PC-07 (eCQM) Severe Obstetric Complications

PC-08 (eCQM): Timely Treatment of Severe Hypertension

Freestanding Psychiatric Hospitals 2026 ORYX Requirements

Freestanding Psychiatric Hospitals (HAP)

Required Chart-abstracted Measures

- HBIPS-2 Hours of Physical Restraint Use
- HBIPS-3 Hours of Seclusion Use

Optional Chart-abstracted Measures

- none

Required eCQMs

- none

Optional eCQMs

- none

[HAP PSYCH] FREESTANDING PSYCHIATRIC HOSPITALS	
REQUIRED MEASURES: The following two measure are required:	
HBIPS-2 (CAM) Hours of Physical Restraint Use	
HBIPS-3 (CAM) Hours of Seclusion Use	
OPTIONAL: Available optional measures may be supported if they are applicable to patient population:	
There are no optional measures for the CY2026 reporting year	

2026 ORYX Requirements

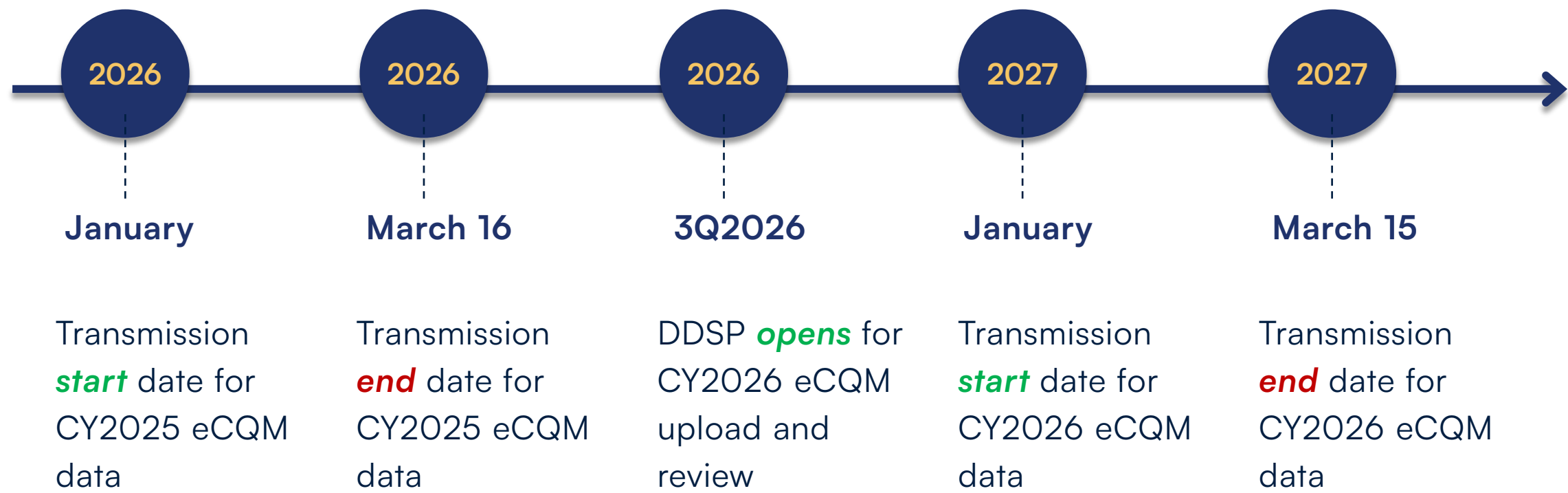
Suspended Hospital Accreditation Programs

MAY ELECT TO SUBMIT ORYX PERFORMANCE MEASURES IF THEY CHOOSE	
Free-standing Children’s Hospitals	Laboratory
Indian Health / Tribal Hospitals	Long Term Acute Care Hospitals
PPS-Exempt-Cancer Hospital	Nursing Care Centers
Ambulatory Care Centers	Office Based Surgical Centers
Behavioral Health Centers	Skilled Nursing Facilities
Home Care / Home Health	Telehealth Entities
Inpatient Rehabilitation Facilities	

DATA SUBMISSION TIMELINE

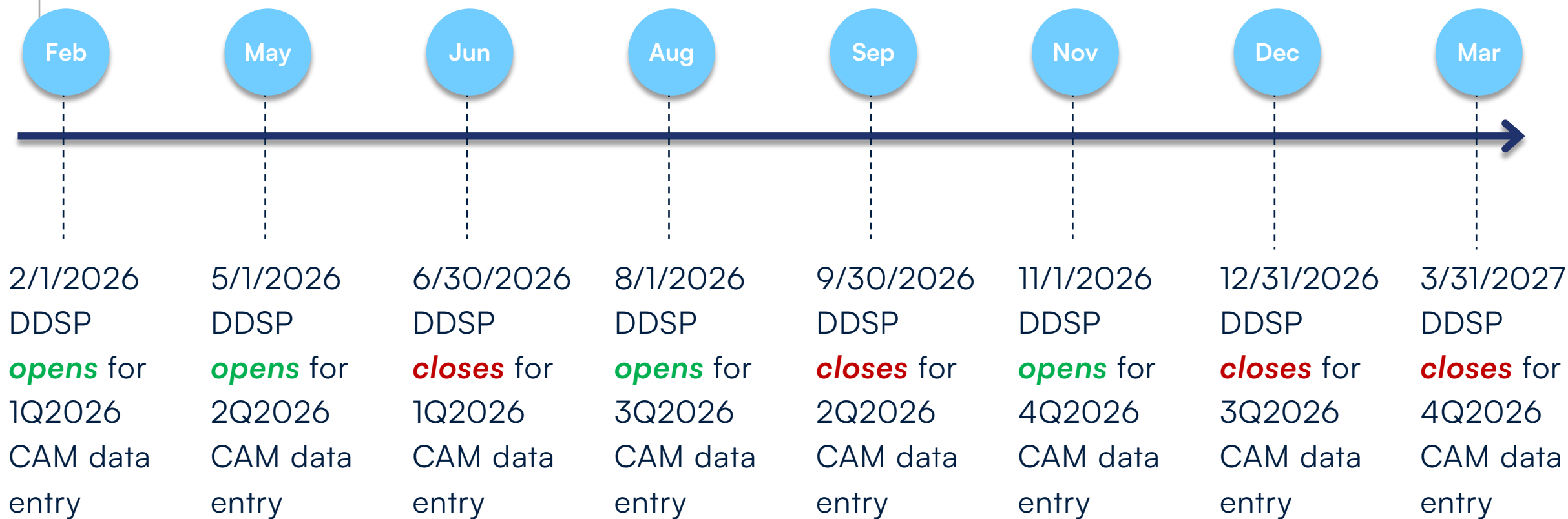
2026 ORYX® Performance Measurement Timeline

eCQMs



2026 ORYX® Performance Measurement Timeline

Chart-abstracted measures



JOINT COMMISSION MEASUREMENT RESOURCES

Resources

ORYX FAQs

We encourage you to visit the ORYX FAQs on the measurement tab on our external website and review the available topics to see if there may be content applicable to questions you may have or subjects you are learning about:

<https://www.jointcommission.org/en-us/knowledge-library/support-center/measurement>

SUPPORT CENTER

Performance Measurement

Browse supporting resources and measures for accreditation and certification performance measurement requirements.

DDSP login

Joint Commission Connect



ORYX Reporting Requirements

The Joint Commission's ORYX® initiative integrates performance measurement data into the accreditation process.

Key Communications

Browse key communications sent to organization contacts related to ORYX performance measurement.

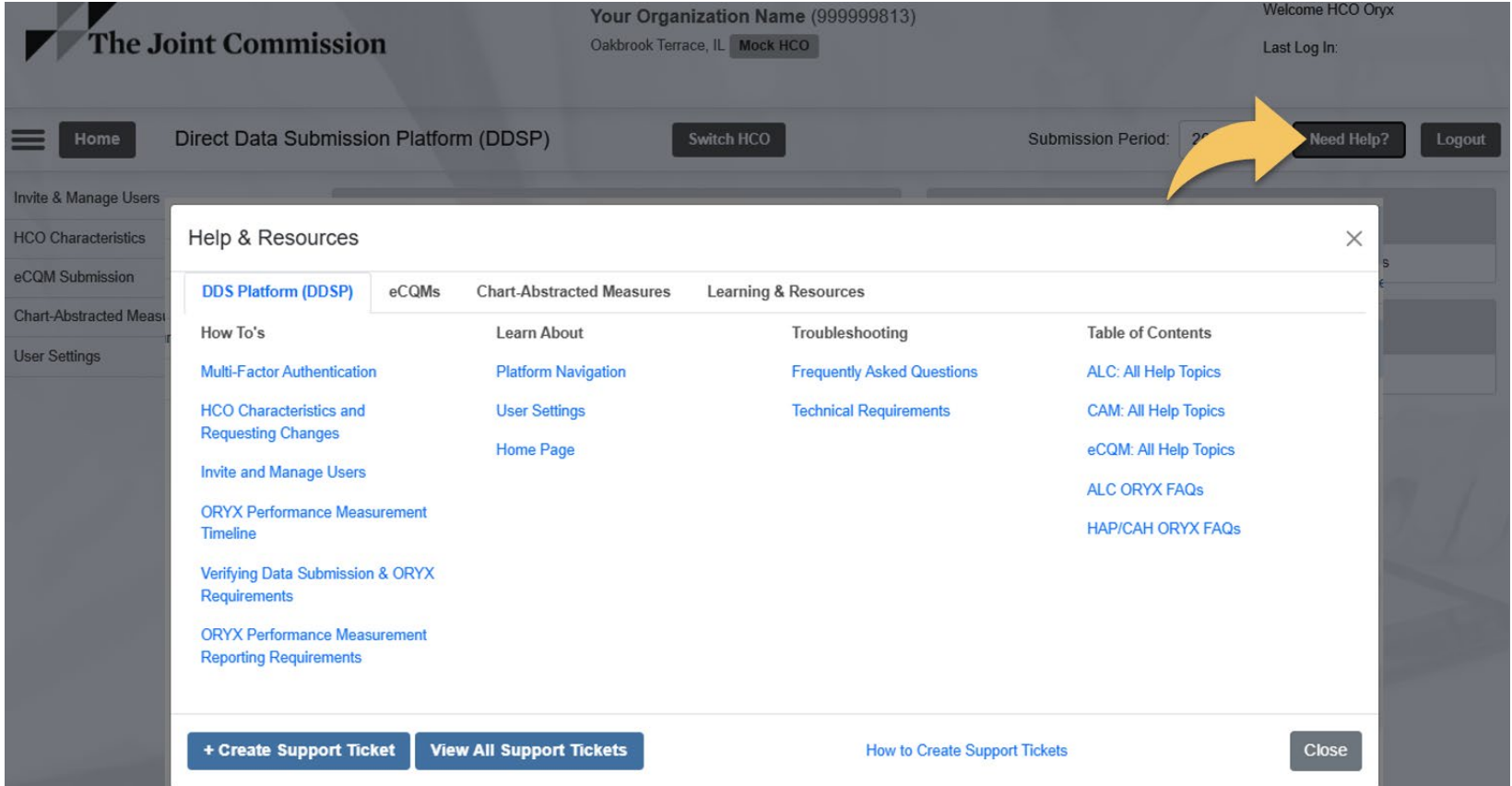
FAQs

Frequently asked questions about performance measurement data submission for Joint Commission.

Resources

DDSP “Need Help?”

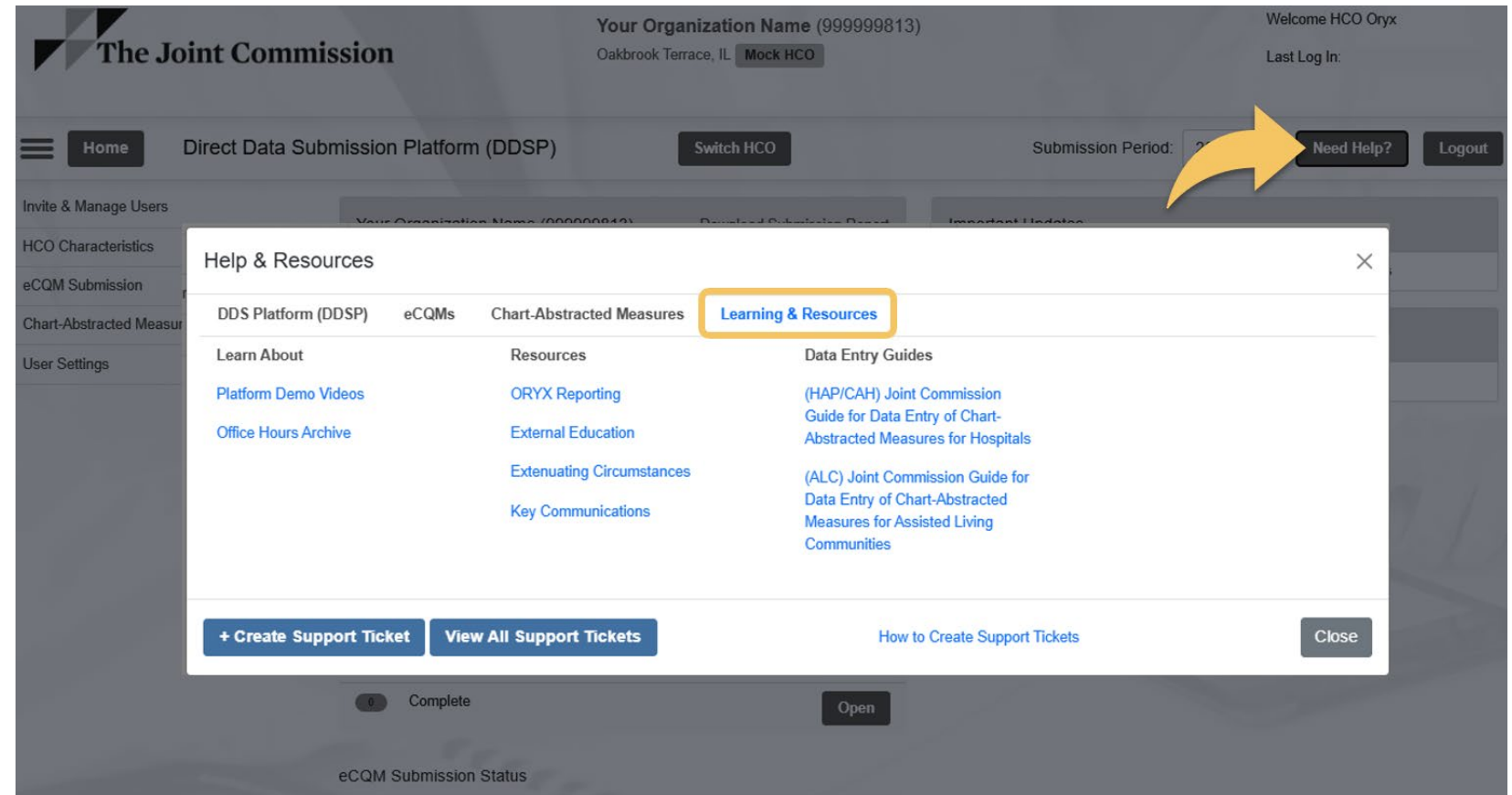
The “Need Help?” button on the DDSP provides platform specific information



Resources

DDSP Platform Education

Platform demo videos are available via the DDSP “Need Help?” button under the “Learning & Resources” tab.



Where to ask questions

ORYX Performance Related Topics

ORYX Performance Measurement

ORYX policy questions, newly accredited organizations with ORYX requirements, accessing the Direct Data Submission Platform (DDSP): Send an email hcooryx@jointcommission.org & include your HCO ID #

Specifications/Measure Interpretation

Measure questions related to measure interpretation, patient data outliers, etc.

Wiki site: <https://manual.jointcommission.org/>

Direct Data Submission Platform

All platform specific questions should be submitted via the DDSP “Need Help?” link.

Standards Interpretation

Go to the Joint Commission website:
<http://www.jointcommission.org> > Scroll down the main page to the section that says Connect With Us.

Accreditation 360 Webinar Series

- ORYX Performance Related Topics

To access Accreditation 360: ORYX Performance Measurement webinar recording links, slides, and transcripts, visit this landing page:

www.jointcommission.org/en-us/knowledge-library/support-center/measurement/quality-measurement-webinars-videos

The screenshot shows a web interface for the Accreditation 360 Webinar Series. At the top, there is a search bar with the placeholder text "Find the webinar you need" and a "Search" button. Below the search bar, there are filters and sorting options. On the left, a "Resource Category" dropdown menu is open, showing options: Continuous Customer Engagement, Expert to Expert, Measure-Specific, Pioneers in Quality General Sessions, and Video Shorts. Above this menu, there are links for "Reset All Filters" and "Showing 20 Results per page". On the right, there is a "Most Recent" dropdown menu. The main content area displays three webinar listings, each under the heading "EXPERT TO EXPERT WEBINAR SERIES". The first listing is "Click Here to Register - Expert to Expert Webinar: 2025 Reporting Year Annual Updates for Safe Use of Opioids—Concurrent Prescribing eCQM" dated July 17, 2025. The second listing is "Click Here to Register - Expert to Expert Webinar: 2025 Reporting Year Annual Updates for Hospital Harm Hyper - and Hypoglycemia eCQMs" dated July 15, 2025. The third listing is "Expert to Expert Webinar 2025 New Measure Review for Hospital Harm — Pressure Injury eCQM (HH-PI)" dated July 10, 2025.

Continuing Education Survey and Certificate

Also see the separate handout detailing the CE requirements.



Access survey via QR code

Use your mobile device to scan the QR code on the next slide. You can pause the presentation.



Access survey via link in email

An automated email sent after you finish the recording also directs you to the evaluation survey.



Survey open for 6 weeks

CEs are available for 6 weeks after webinar release. Promptly complete the survey.



Obtain Certificate

After completing survey, print or download PDF CE Certificate. Certificate link also provided via email.



Thank You!



tjcwebinarnotifications@jointcommission.org



www.jointcommission.org/en-us/knowledge-library/support-center/measurement/quality-measurement-webinars-videos

Subject Matter Experts and Content Creators

The principal authors of the content of this webinar includes Joint Commission professionals

- * Michelle Dardis, MSN, RN
- * Susan Yendro, MSN, RN
- * Kelly Claytor, BS
- * Andy Kubilius, MA
- * Brandi Wamhoff, MPH
- * Jessica Woodruff, MPH