



Annual Updates for Malnutrition Care Score (CMS986v5) eCQM for the 2026 Reporting Year

Expert to Expert Webinar Series

Broadcast Webinar
April 9, 2026
Continuing Education (CE)
Credit Available for Live
Webinar Attendance only

Webinar Platform – Functionality

Audio is by VOIP only – Use your computer speakers/headphones to listen. There are no dial in lines. Participants are connected in listen-only mode. Feedback or dropped audio are common for live streaming events. Refresh your screen/rejoin.

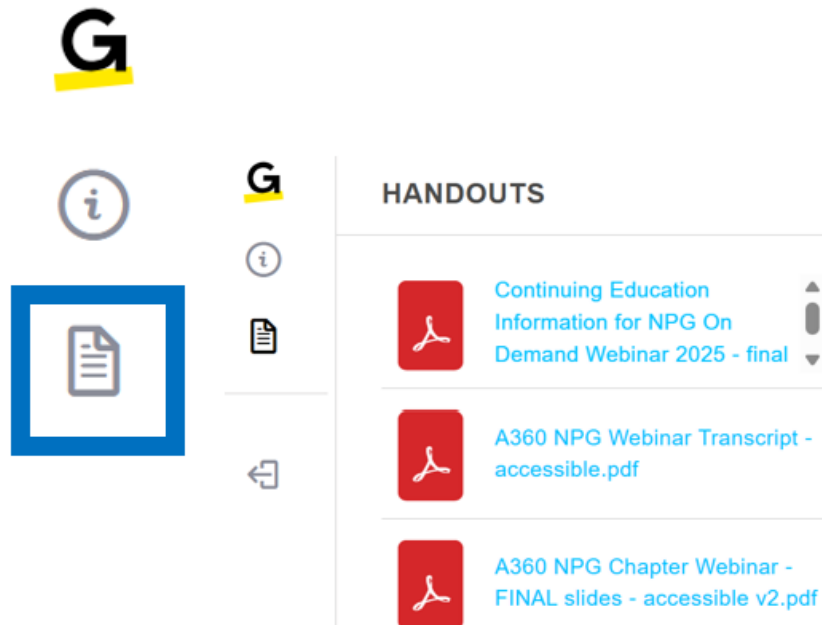
We will not be recognizing the Raise a Hand or Chat features.

To ask a question, click on the Question Mark icon in the audience toolbar. A panel will open for you to type your question and submit.

The slides are designed to follow Americans with Disabilities Act rules.



Access the Slides



Click document icon in the navigation pane

Select file name

Document will open in a new window

Print or download

Two weeks after this webinar, the slides will be accessible via the eCQI Resource Center and also on Joint Commission's website:

www.jointcommission.org/en-us/knowledge-library/support-center/measurement/quality-measurement-webinars-videos

Continuing Education Information

Relevant information about Continuing Education (CE) credit can be found in attachment provided:

- Entities providing credit
- Requirements to earn credit
- Survey/attestation and certificate



Credit is available for this webinar for live broadcast attendance only.

Joint Commission maintains a participant's privacy and confidentiality per organizational policy. Please visit [Joint Commission's website](#) for more information on continuing education policies.

Participant Learning Objectives



Locate eCQM resources on the eCQI Resource Center.

Facilitate your organization's implementation of the Malnutrition Care Score eCQM annual updates for the 2026 reporting year.

Utilize answers to common issues/questions regarding the Malnutrition Care Score eCQM to inform 2026 use/implementation.

Topics Not Covered in this Program



Basic eCQM concepts

Topics related to chart abstracted measures

Process improvement efforts related to this measure

eCQM validation

- ensure your data is validated before submitting
- ensure that extreme outlier results are verified

Disclosure Statement

All staff and subject matter experts have disclosed that they do not have any conflicts of interest. For example, financial arrangements, affiliations with, or ownership of organizations that provide grants, consultancies, honoraria, travel, or other benefits that would impact the presentation of this webinar content.



Webinar Agenda



- Review the Malnutrition Care Score eCQM annual updates for Reporting Year 2026
- Overview of the measure flow/algorithm
- Frequently Asked Questions (FAQs)
- Live Q&A Segment.

eCQM Specifications and Resources

A PDF handout includes directions to access the eCQM specifications, value sets, measure flow diagrams and technical release notes on the eCQI Resource Center.

Please see the [landing page for 2026 resources](#).

Please see the [landing page for 2026 specifications](#).

The screenshot shows the eCQI Resource Center website. The header includes the eCQI 10th Anniversary Resource Center logo and navigation links for eCQMs, dQMs, Resources, About, and Log Man: Acc. The main content area is titled 'Hospital - Inpatient eCQMs' and features a search filter for '2026' and 'eCQMs'. Below the filter, there is a link to 'eCQM Standards and Tools Version' and a summary of 17 Hospital - Inpatient eCQMs for the 2026 Reporting Period.

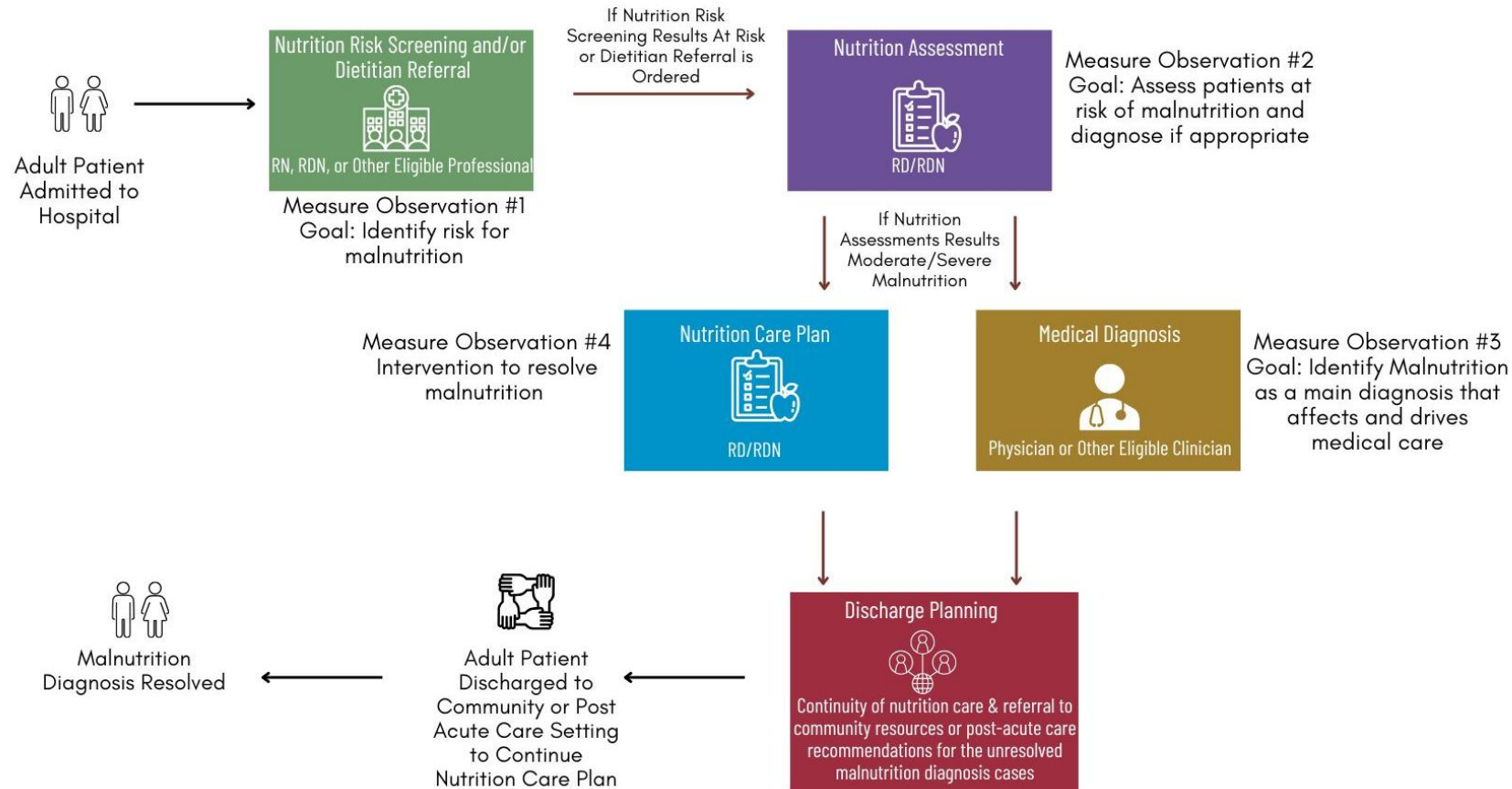
Malnutrition Care Score (MCS)

CMS986v5

The Malnutrition Care Score (CMS986v5)

- Formerly known as the Global Malnutrition Composite Score
- Focuses on identifying, diagnosing, and treating malnutrition in acute care
- Highlights the importance of interdisciplinary teams
- Continuous variable, intermediate clinical outcome measure composed of six measure observations

CMS986v5 is Based on Evidence-Based Clinical Workflow for Malnutrition Care



2025 Copyright by the Commission on Dietetic Registration  For additional information, email quality@eatright.org

Measure Observations 1 and 2

Measure Observation	Description	Identifies Documentation
1	Encounter with Malnutrition Risk Screening and Identified Result or Encounter Hospital Dietitian Referral	<ul style="list-style-type: none"> ✓ Malnutrition Risk Screening was performed ✓ "Malnutrition Screening Finding of Not At Risk Result" ✓ "Malnutrition Screening Finding of At Risk Result" ✓ Hospital Dietitian Referral is ordered, regardless of the presence of the Malnutrition Risk Screening
2	Encounter with Nutrition Assessment and Identified Status	<ul style="list-style-type: none"> ✓ "Nutrition Assessment" was performed ✓ "Nutrition Assessment Status Finding of Well Nourished or Not Malnourished or Mildly Malnourished" ✓ "Nutrition Assessment Status Finding of Moderately Malnourished" ✓ "Nutrition Assessment Status Finding of Severely Malnourished" documented

Measure Observations 3 and 4

Measure Observation	Description	Identifies Documentation
3	Encounter with a current Malnutrition Diagnosis	✓ "Malnutrition Diagnosis" was documented
4	Encounter with a current Nutrition Care Plan	✓ "Nutrition Care Plan" was performed

Measure Observations 1 through 4 each receive a score of 0 if not documented or 1 if documented

Measure Observations 5 and 6

Measure Observation	Description	Possible Values
5	Sum of scores for Measure Observations 1 through 4	Possible values may be 0, 1, 2, 3, or 4
6	Measure Observation 5 divided by the number of eligible occurrences and multiplied by 100	Possible values for measure observation 6 are 0%, 50%, 75%, or 100%

Eligible Occurrences

Mathematical Denominator

Eligible Occurrence is Always 4 Except:

Equals 1	Malnutrition Risk Screening Not At Risk result with no Dietitian Referral
Equals 2	Malnutrition Risk Screening At Risk result and/or a Dietitian Referral, but there is no Nutrition Assessment completed
Equals 2	When Measure Observation 2 has a Well Nourished, Not Malnourished, or Mildly Malnourished result

MCS 2026 Annual Updates (1/2)

Measure Components	2026 Reporting Year
Title/Header	Measure title updated from Global Malnutrition Composite Score to Malnutrition Care Score to better align with measure intent and improve clarity
Initial Population	Age expansion to include all adults 18 years of age and older
Initial Population	Eligible encounters that end during the measurement period but may start in another are included, to align with general measure standards and more broadly capture malnutrition care
Population Exclusion	Hospice patients are no longer included in the calculation to better align with treatment plan goals of hospice patients
Logic	Most recent nutrition assessment prioritized to best capture the fluctuations in nutrition status throughout an admission

MCS 2026 Annual Updates (2/2)

Measure Components	2026 Reporting Year
Value Set	Value set Malnutrition Screening Finding of At Risk Result (2.16.840.1.113762.1.4.1095.38): 1 SNOMED CT code (704358009) removed due to deactivation
Value Set	Value Set Dietitian Referral (2.16.840.1.113762.1.4.1095.21): 2 SNOMED CT codes added (408285001, 103699006) for age expansion and referral inclusion
Value Set	Value Set Nutrition Assessment Finding of Severely Malnourished (2.16.840.1.113762.1.4.1095.43): 1 SNOMED CT code added (432788009) for age expansion
Value Set	Value Set Malnutrition Diagnosis (2.16.840.1.113762.1.4.1095.55): 1 SNOMED CT code added (432788009) for age expansion; 11 ICD-10 CM codes added (E40, E41, E42, E45, E64, O25.10, O25.11, O25.12, O25.13, O25.2, O.25.3) for age expansion and terminology additions
Value Set	New Value Set Hospice Status (2.16.840.1.113762.1.4.1095.101) created to reflect new exclusion to MCS population

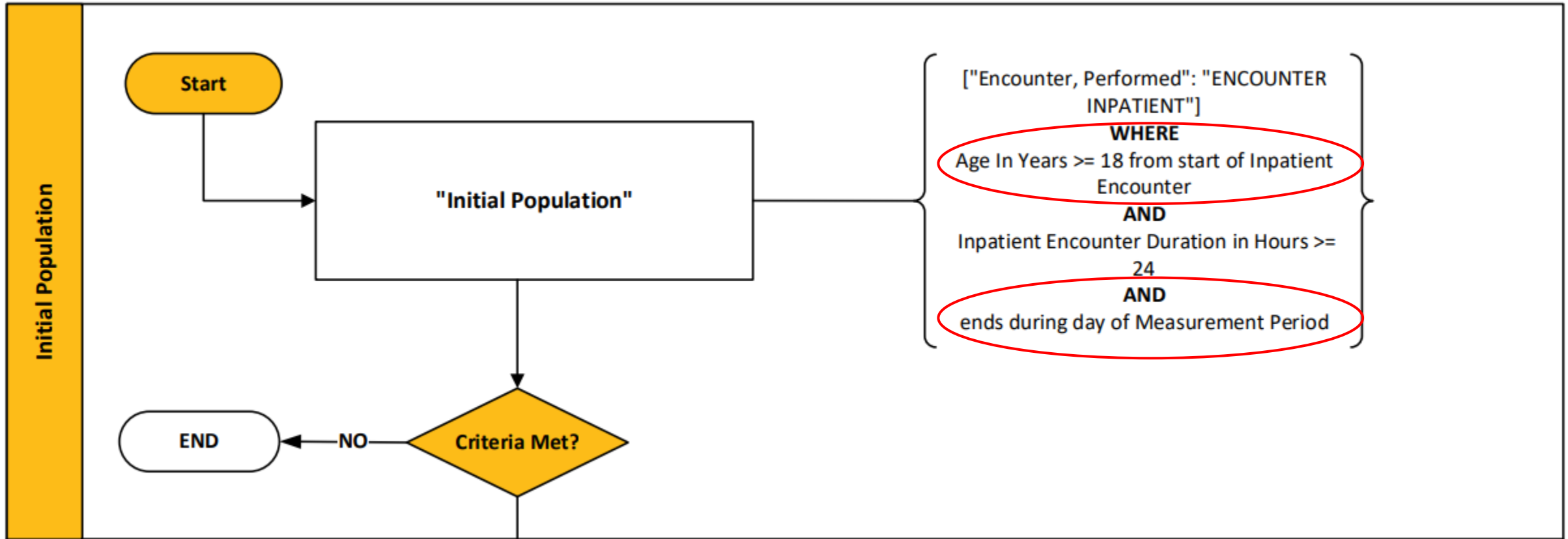
Measure Title Update

- Considerations requested by CMS
- Measure name was Global Malnutrition Composite Score
 - ➔ Now named Malnutrition Care Score
- Better reflects the measure intent

Initial Population Measure Logic



Initial Population



Logic Update (1/16)

Measure Components	2025 Reporting Year	2026 Reporting Year
Initial Population	<p>["Encounter, Performed": "Encounter Inpatient"] EncounterInpatient where AgeInYearsAt(date from start of EncounterInpatient.relevantPeriod) >= 65</p> <p>and duration in hours of EncounterInpatient.relevantPeriod >= 24 and EncounterInpatient.relevantPeriod during day of "Measurement Period"</p>	<p>["Encounter, Performed": "Encounter Inpatient"] EncounterInpatient where AgeInYearsAt(date from start of EncounterInpatient.relevantPeriod) >= 65<u>18</u>²</p> <p>and duration in hours of (EncounterInpatient.relevantPeriod) >= 24</p> <p>and EncounterInpatient.relevantPeriod <u>ends</u>² during day of "Measurement Period"</p>

Notes:
¹ Indicates text that contains strikethrough
² Indicates underlined text

Updated Timing Clauses

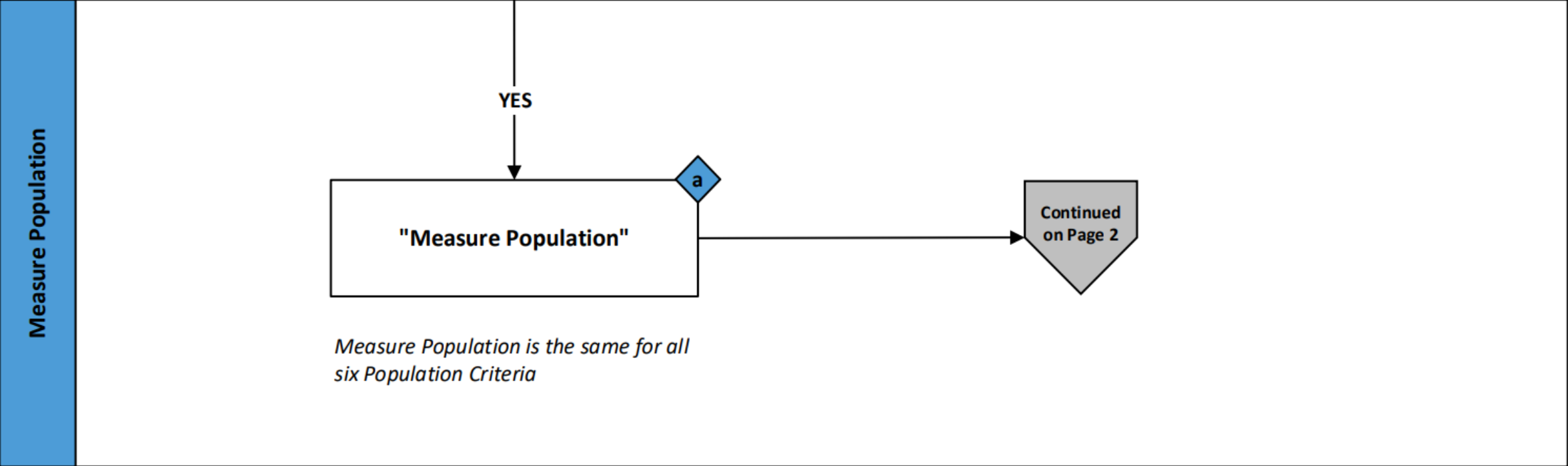
- Encounters ending during the measurement period are now included even if they started in a prior period
- Enhanced timing flexibility
- Better reflects true care delivery

Measure Population

Measure Logic



Measure Population



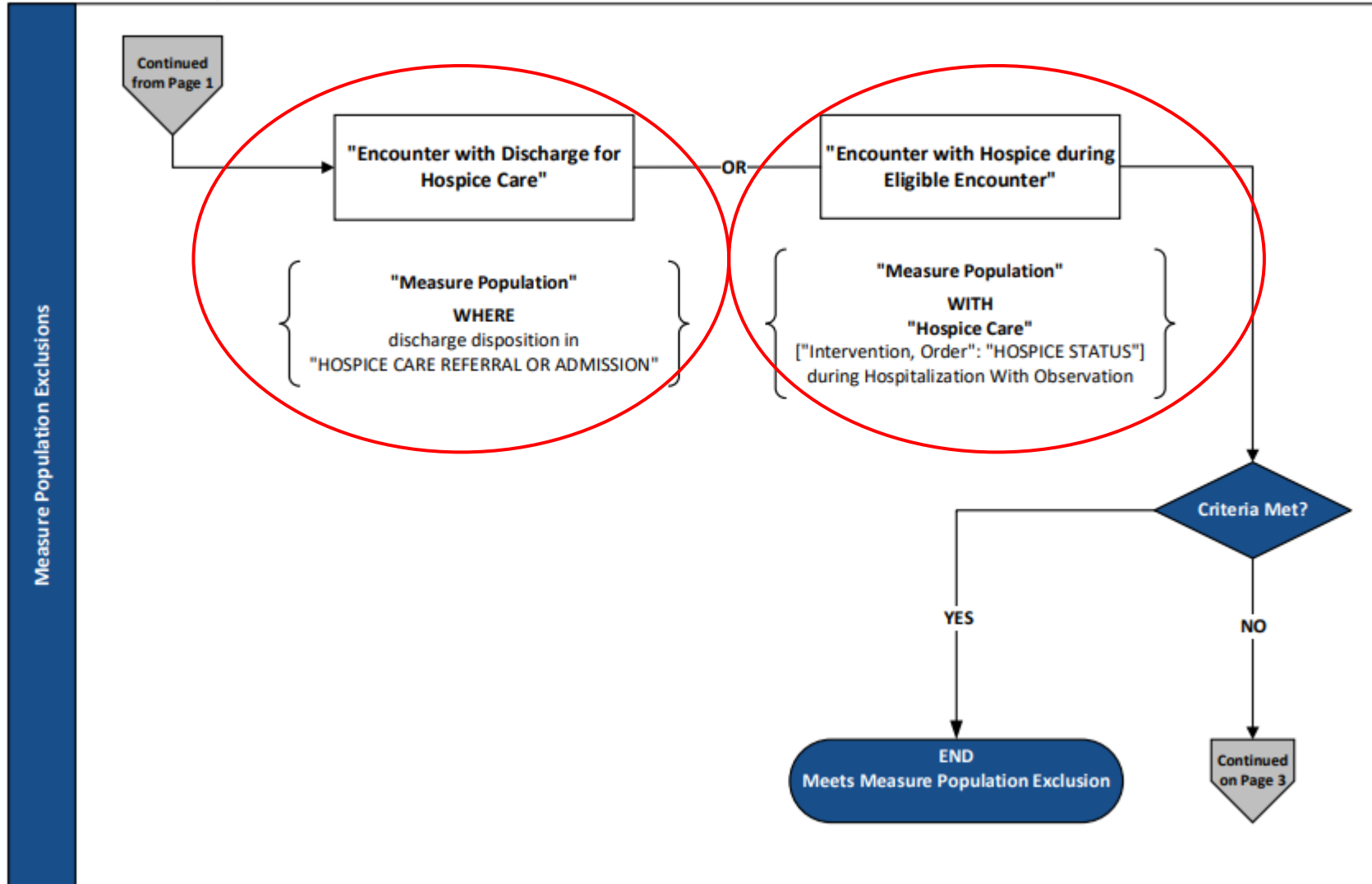
Measure Population is the same for all six Population Criteria

Measure Population Exclusions

Measure Logic



Measure Population Exclusions



Logic Update (2/16)

Measure Components	2026 Reporting Year
Measure Population Exclusion	<pre> define "Measure Population Exclusion": "Encounter with Discharge for Hospice Care" union "Encounter with Hospice during Eligible Encounter"² define "Hospice Care": ["Intervention, Order": "Hospice Status"]² define "Encounter with Discharge for Hospice Care": "Measure Population" QualifyingEncounter where QualifyingEncounter.dischargeDisposition in "Hospice Care Referral or Admission"² define "Encounter with Hospice during Eligible Encounter": "Measure Population" QualifyingEncounter with "Hospice Care" HospiceCare such that HospiceCare.authorDatetime during Global."HospitalizationWithObservation" (QualifyingEncounter)² </pre>

Notes:

¹ Indicates text that contains strikethrough

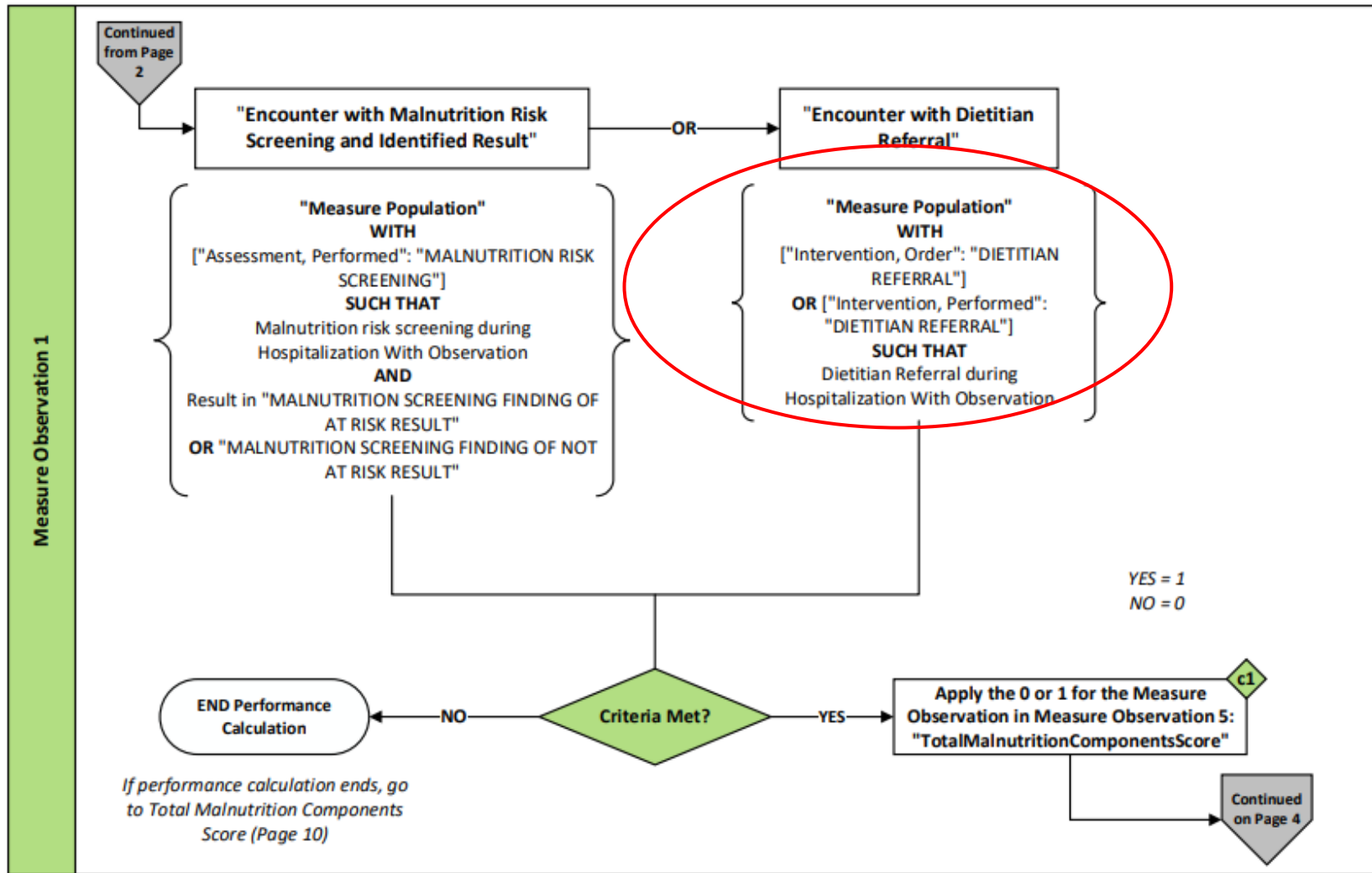
² Indicates underlined text

Measure Observations

Measure Logic



Measure Observation 1



Logic Update (3/16)

Measure Components	2025 Reporting Year	2026 Reporting Year
Measure Observation 1	define "Encounter with Hospital Dietitian Referral": "Initial Population" QualifyingEncounter with ["Intervention, Order": "Hospital Dietitian Referral"] HospitalDietitianReferral such that HospitalDietitianReferral.authorDatetime during Global."HospitalizationWithObservation" (QualifyingEncounter)	define "Encounter with Hospital ¹ Dietitian Referral": <u>"Measure Population"</u> ² QualifyingEncounter with (<u>["Intervention, Performed": "Dietitian Referral"] union²["Intervention, Order": "Hospital¹ Dietitian Referral"]</u>) Hospital ¹ DietitianReferral such that <u>Coalesce(start of Global."NormalizeInterval"²(Hospital¹DietitianReferral.relevantDatetime, <u>DietitianReferral.relevantPeriod</u>), <u>DietitianReferral.authorDatetime</u>)²</u> during Global."HospitalizationWithObservation" (QualifyingEncounter)

Notes:

¹ Indicates text that contains strikethrough

² Indicates underlined text

Logic Update (4/16)

Measure Components	2025 Reporting Year	2026 Reporting Year
Measure Observation 1 (cont.)	define "Encounter with Malnutrition Screening At Risk Result": "Initial Population" QualifyingEncounter with ["Assessment, Performed": "Malnutrition Risk Screening"] MalnutritionRiskScreening such that Coalesce(start of Global."NormalizeInterval"(MalnutritionRiskScreening.relevantDatetime, MalnutritionRiskScreening.relevantPeriod), MalnutritionRiskScreening.authorDatetime) during Global."HospitalizationWithObservation" (QualifyingEncounter) and MalnutritionRiskScreening.result in "Malnutrition Screening Finding of At Risk Result" and not (exists "Encounter with Malnutrition Screening Not At Risk Result")	define "Encounter with Malnutrition Screening At Risk Result": <u>"Measure² Population" QualifyingEncounter with ["Assessment, Performed": "Malnutrition Risk Screening"] MalnutritionRiskScreening such that Coalesce(start of Global."NormalizeInterval"(MalnutritionRiskScreening.relevantDatetime, MalnutritionRiskScreening.relevantPeriod), MalnutritionRiskScreening.authorDatetime) during Global."HospitalizationWithObservation" (QualifyingEncounter) and MalnutritionRiskScreening.result in "Malnutrition Screening Finding of At Risk Result" and not (exists "Encounter with Malnutrition Screening Not At Risk Result")¹</u>

Notes:

¹ Indicates text that contains strikethrough

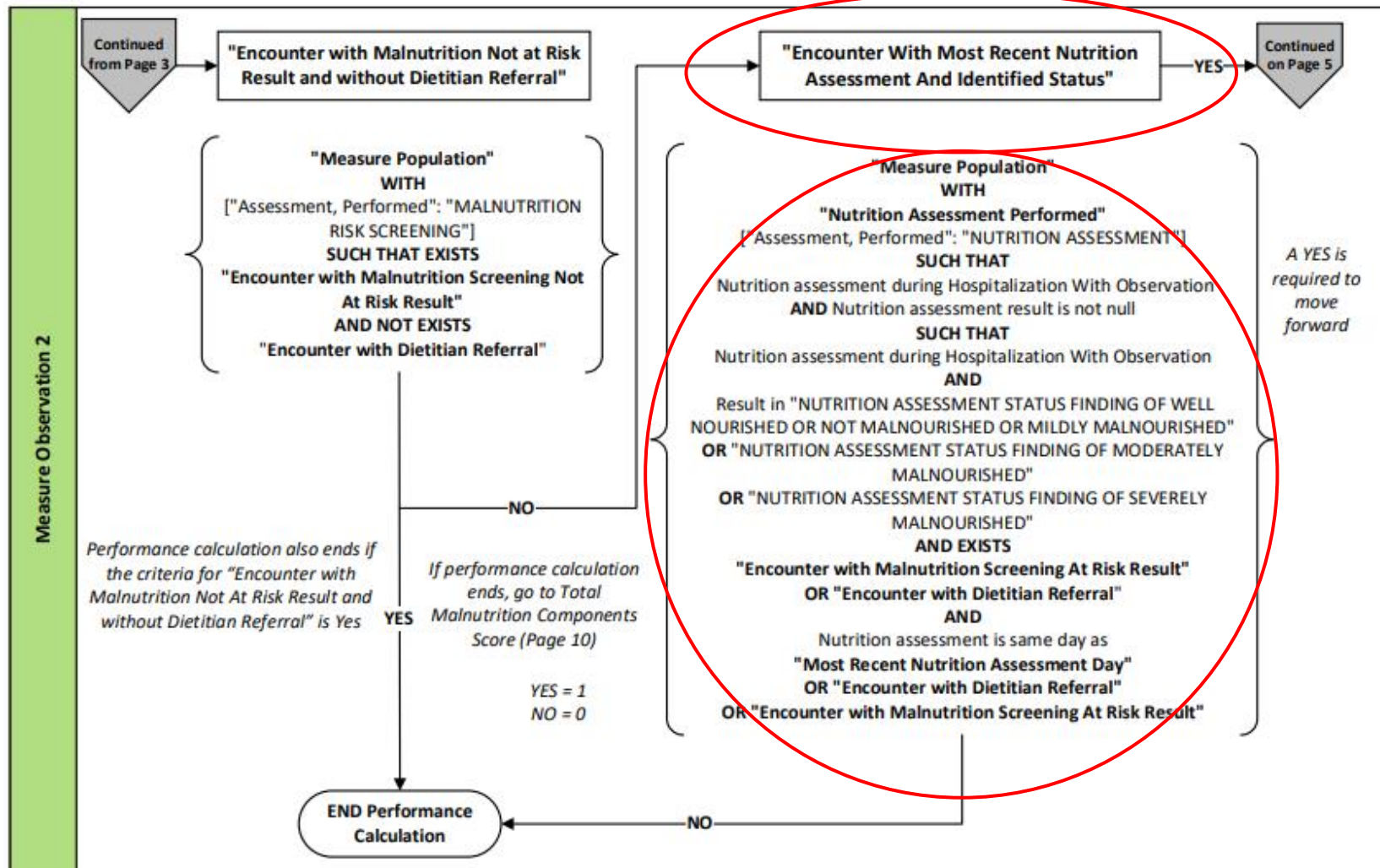
² Indicates underlined text

Logic Update (5/16)

Measure Components	2025 Reporting Year	2026 Reporting Year
Measure Observation 1 (cont.)	<pre>define function "Measure Observation 1"(Encounter "Encounter, Performed"): if ("Encounter with Malnutrition Risk Screening and Identified Result or with Hospital Dietitian Referral" contains Encounter and ("Encounter with Malnutrition Screening Not At Risk Result" contains Encounter or ("Encounter with Malnutrition Screening At Risk Result" contains Encounter)) or exists ("Encounter with Hospital Dietitian Referral")) then 1 else 0</pre>	<pre>define function "Measure Observation 1"(Encounter "Encounter, Performed"): if ("Encounter with Malnutrition Risk Screening and Identified Result or with Hospital Dietitian Referral¹" contains Encounter or ("Encounter with Malnutrition Screening At Risk Result" contains Encounter))¹ or <u>exists</u>¹("Encounter with <u>Hospital</u>¹Dietitian Referral" contains Encounter)) then 1 else 0</pre>

Notes:
¹ Indicates text that contains strikethrough
² Indicates underlined text

Measure Observation 2



Logic Update (6/16)

Measure Components	2025 Reporting Year	2026 Reporting Year
Measure Observation 2	define "Encounter with Nutrition Assessment and Identified Status": "Initial Population" QualifyingEncounter with ["Assessment, Performed": "Nutrition Assessment"] NutritionAssessment such that Coalesce(start of Global."NormalizeInterval"(NutritionAssessment.relevantDatetime, NutritionAssessment.relevantPeriod), NutritionAssessment.authorDatetime) during Global."HospitalizationWithObservation" (QualifyingEncounter) and (NutritionAssessment.result in "Nutrition Assessment Status Finding of Well Nourished or Not Malnourished or Mildly Malnourished"	define "<u>Most Recent</u>²Encounter with Nutrition Assessment and Identified Status": ² "Measure ² Population" QualifyingEncounter with " <u>Nutrition Assessment Performed</u> " ² <u>NutritionAssessment²</u> such that Coalesce(start of Global."NormalizeInterval" (NutritionAssessment.relevantDatetime, NutritionAssessment.relevantPeriod), NutritionAssessment.authorDatetime) during Global."HospitalizationWith Observation" (QualifyingEncounter) and (NutritionAssessment.result in "Nutrition Assessment Status Finding of Well Nourished or Not Malnourished or Mildly Malnourished"

Notes:
¹ Indicates text that contains strikethrough
² Indicates underlined text

Logic Update (7/16)

Measure Components	2025 Reporting Year	2026 Reporting Year
Measure Observation 2 (cont.)	<p>or (NutritionAssessment.result in "Nutrition Assessment Status Finding of Moderately Malnourished") or (NutritionAssessment.result in "Nutrition Assessment Status Finding of Severely Malnourished")) and (exists "Encounter with Malnutrition Screening At Risk Result" or exists ("Encounter with Hospital Dietitian Referral"))</p>	<p>or (Nutrition Assessment.result in "Nutrition Assessment Status Finding of Moderately Malnourished") or (NutritionAssessment.result in "Nutrition Assessment Status Finding of Severely Malnourished")) and (exists ("Encounter with Malnutrition Screening At Risk Result") or exists ("Encounter with Hospital¹ Dietitian Referral")) and ((Coalesce(start of Global."NormalizeInterval" <u>(NutritionAssessment .relevantDatetime,</u> <u>NutritionAssessment.relevantPeriod), NutritionAssessment.</u> <u>authorDatetime) same day as "Most Recent Nutrition Assessment Day") or exists ("Encounter with Dietitian Referral") or exists (<u>"Encounter with Malnutrition Screening At Risk Result"</u>))²</u></p>

Notes:
¹ Indicates text that contains strikethrough
² Indicates underlined text

Logic Update (8/16)

Measure Components	2025 Reporting Year	2026 Reporting Year
Measure Observation 2 (cont.)	define "Encounter with Nutrition Assessment Status Not or Mildly Malnourished": "Initial Population" QualifyingEncounter with ["Assessment, Performed": "Nutrition Assessment"] NutritionAssessment such that Coalesce(start of Global."NormalizeInterval"(NutritionAssessment.relevant Datetime, NutritionAssessment.relevantPeriod), NutritionAssessment.authorDatetime) during Global."HospitalizationWithObservation" (QualifyingEncounter) and NutritionAssessment.result in "Nutrition Assessment Status Finding of Well Nourished or Not Malnourished or Mildly Malnourished"	<u>define "Most Recent Nutrition Assessment Day":</u> <u>Last("Nutrition Assessment Date" NutritionAssessmentDate _____ sort asc)</u> ² <u>define "Nutrition Assessment Date":</u> <u>"Nutrition Assessment Performed" NutritionAssessment</u> <u>return date from Coalesce(start of Global."NormalizeInterval"(NutritionAssessment.relevantDatetime, NutritionAssessment.relevantPeriod), NutritionAssessment.authorDatetime)</u> ²

Notes:
¹ Indicates text that contains strikethrough
² Indicates underlined text

Logic Update (9/16)

Measure Components	2025 Reporting Year	2026 Reporting Year
Measure Observation 2 (cont.)	define "Encounter with Nutrition Assessment Status Finding of Moderately Malnourished": "Initial Population" QualifyingEncounter with ["Assessment, Performed": "Nutrition Assessment"] NutritionAssessment such that Coalesce(start of Global."NormalizeInterval"(NutritionAssessment.relevantDatetime, NutritionAssessment.relevantPeriod), NutritionAssessment.authorDatetime) during Global."HospitalizationWithObservation" (QualifyingEncounter) and NutritionAssessment.result in "Nutrition Assessment Status Finding of Moderately Malnourished"	

Logic Update (10/16)

Measure Components	2025 Reporting Year	2026 Reporting Year
Measure Observation 2 (cont.)	define "Encounter with Nutrition Assessment Status Finding of Severely Malnourished": "Initial Population" QualifyingEncounter with ["Assessment, Performed": "Nutrition Assessment"] NutritionAssessment such that Coalesce(start of Global."NormalizeInterval"(NutritionAssessment.relevantDatetime, NutritionAssessment.relevantPeriod), NutritionAssessment.authorDatetime) during Global."HospitalizationWithObservation" (QualifyingEncounter) and NutritionAssessment.result in "Nutrition Assessment Status Finding of Severely Malnourished"	<u>define "Nutrition Assessment Performed":</u> <u>["Assessment, Performed": "Nutrition Assessment"] NutritionAssessment with "Measure Population" QualifyingEncounter _____ such that Coalesce(start of Global."NormalizeInterval"(NutritionAssessment.relevantDatetime, NutritionAssessment.relevantPeriod), NutritionAssessment.authorDatetime) during Global."HospitalizationWithObservation" (QualifyingEncounter) _____ and NutritionAssessment.result is not null²</u>

Notes:

¹ Indicates text that contains strikethrough

² Indicates underlined text

Logic Update (11/16)

Measure Components	2025 Reporting Year	2026 Reporting Year
Measure Observation 2 (cont.)	define function "Measure Observation 2"(Encounter "Encounter, Performed"): if ("Encounter with Malnutrition Not at Risk Result and without Hospital Dietitian Referral") contains Encounter then 0 else if ("Encounter with Nutrition Assessment and Identified Status" contains Encounter and (("Encounter with Nutrition Assessment Status Not or Mildly Malnourished" contains Encounter or "Encounter with Nutrition Assessment Status Finding of Moderately Malnourished" contains Encounter or "Encounter with Nutrition Assessment Status Finding of Severely Malnourished" contains Encounter)	define function "Measure Observation 2"(Encounter "Encounter, Performed"): if ("Encounter with Malnutrition Not at Risk Result and without Hospital ¹ Dietitian Referral") contains Encounter then 0 else if ("Encounter With <u>Most Recent</u> ² Nutrition Assessment And Identified Status" contains Encounter and (("Encounter with Nutrition Assessment Status Not or Mildly Malnourished" contains Encounter or "Encounter with Nutrition Assessment Status Finding of Moderately Malnourished" contains Encounter or "Encounter with Nutrition Assessment Status Finding of Severely Malnourished" contains Encounter) ¹

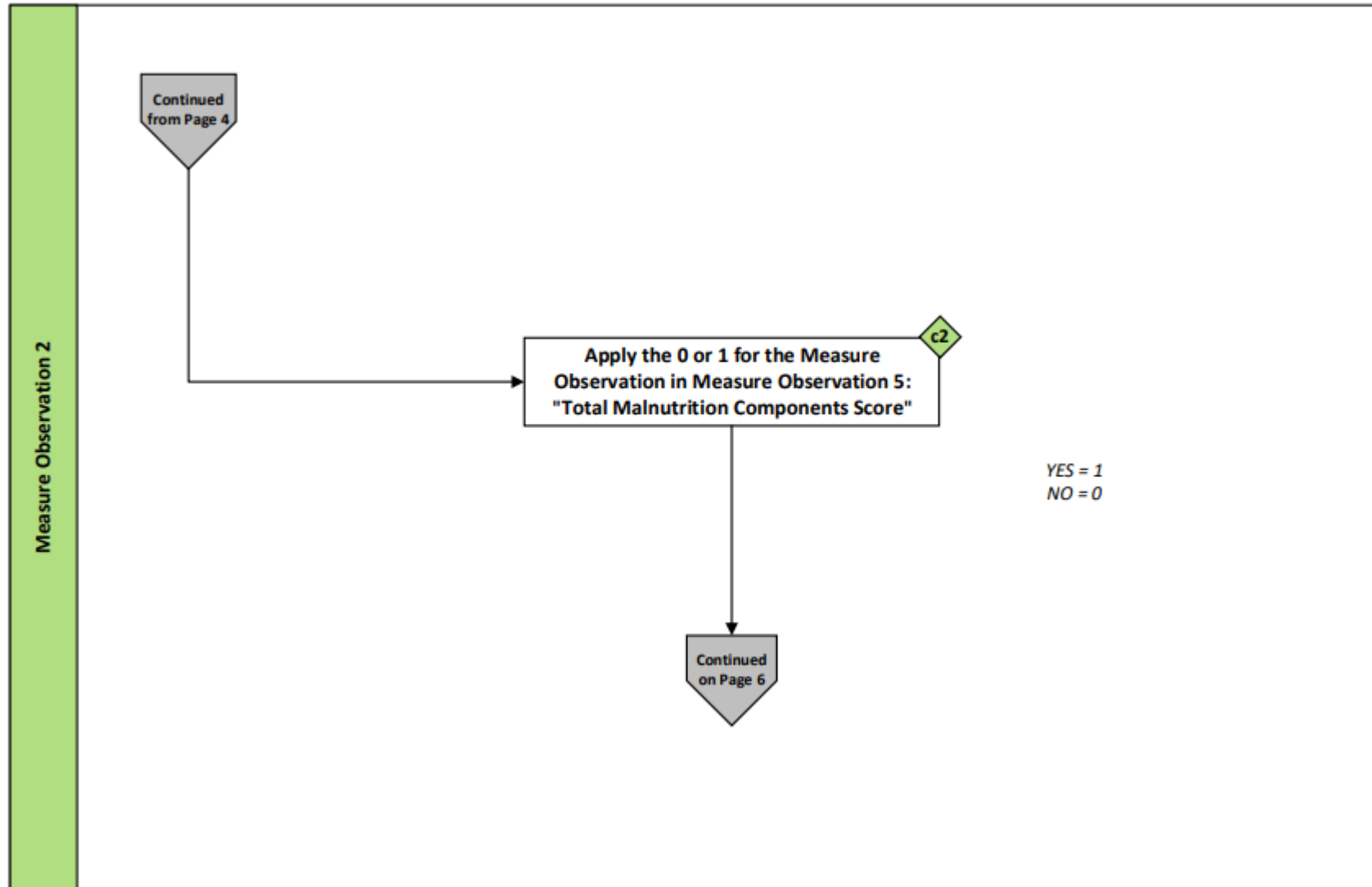
Notes:
¹ Indicates text that contains strikethrough
² Indicates underlined text

Logic Update (12/16)

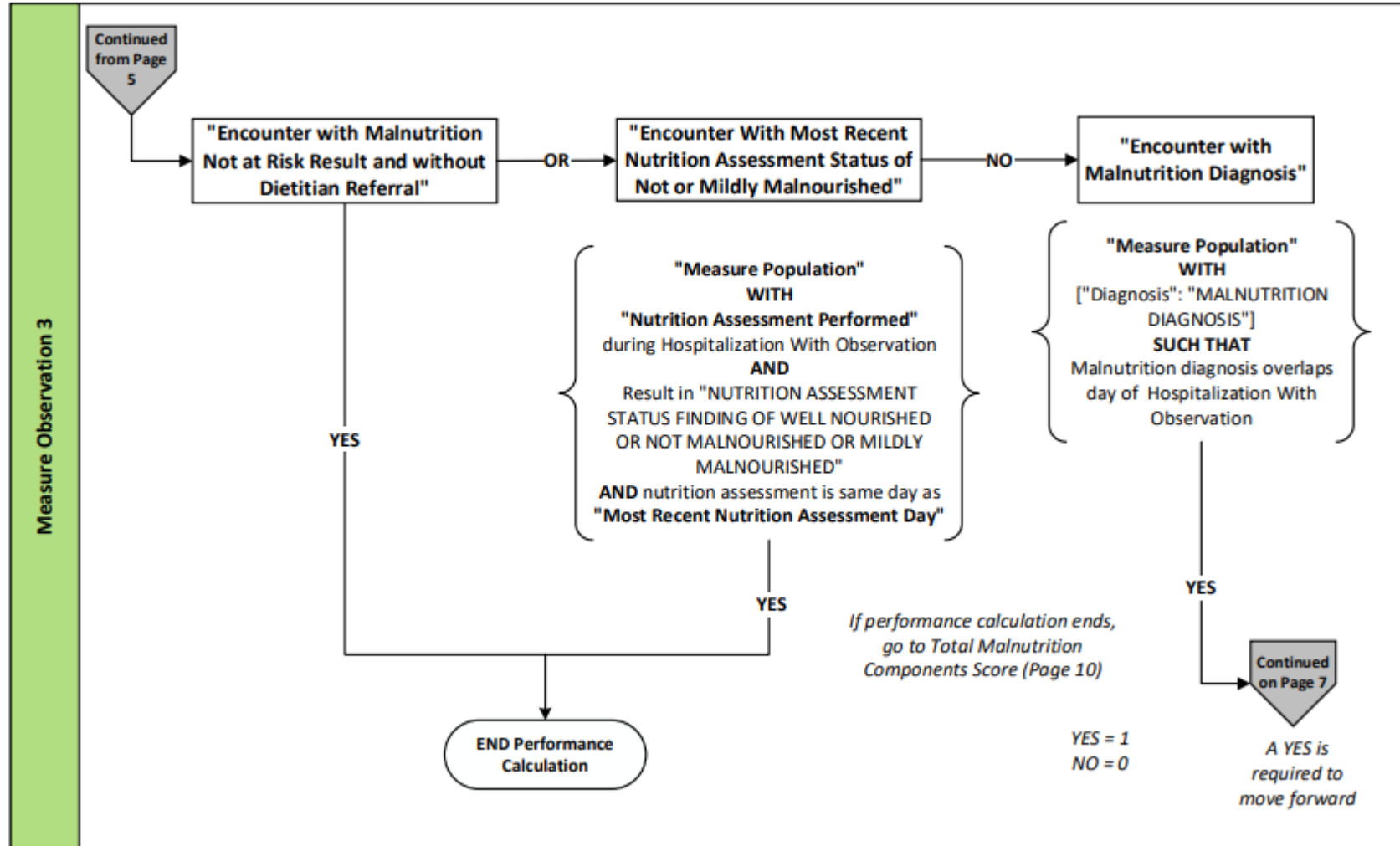
Measure Components	2025 Reporting Year	2026 Reporting Year
Measure Observation 2 (cont.)	<pre> and (("Encounter with Malnutrition Risk Screening and Identified Result or with Hospital Dietitian Referral" contains Encounter and "Encounter with Malnutrition Screening At Risk Result" contains Encounter) or ("Encounter with Hospital Dietitian Referral") contains Encounter))) then 1 else 0 </pre>	<pre> and (("Encounter with Malnutrition Risk Screening and Identified Result or with Hospital Dietitian Referral" contains Encounter and "Encounter with Malnutrition Screening At Risk Result" contains Encounter) or ("Encounter with Hospital Dietitian Referral") contains Encounter)¹) then 1 else 0 </pre>

Notes:
¹ Indicates text that contains strikethrough
² Indicates underlined text

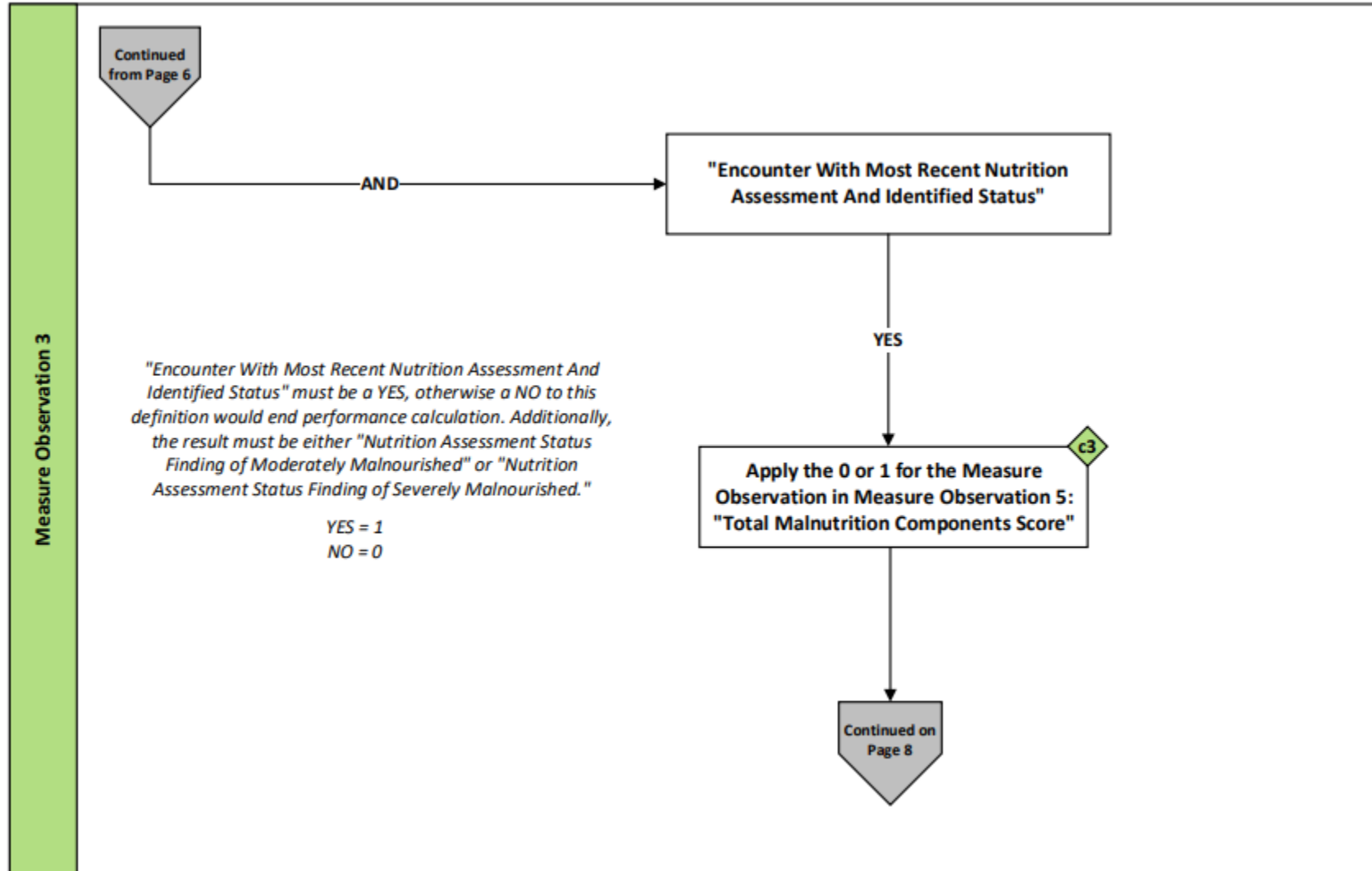
Measure Observation 2 (continued)



Measure Observation 3



Measure Observation 3 (cont.)



Logic Update (13/16)

Measure Components	2025 Reporting Year	2026 Reporting Year
Measure Observation 3	define "Encounter with Malnutrition Diagnosis": "Initial Population" QualifyingEncounter with ["Diagnosis": "Malnutrition Diagnosis"] MalnutritionDiagnosis such that MalnutritionDiagnosis.prevalencePeriod overlaps Global."HospitalizationWithObservation" (QualifyingEncounter)	define "Encounter with Malnutrition Diagnosis": " Initial ¹ <u>Measure</u> ² Population" QualifyingEncounter with ["Diagnosis": "Malnutrition Diagnosis"] MalnutritionDiagnosis such that MalnutritionDiagnosis.prevalencePeriod overlaps <u>day of</u> ² Global."HospitalizationWithObservation" (QualifyingEncounter)

Notes:
¹ Indicates text that contains strikethrough
² Indicates underlined text

Logic Update (14/16)

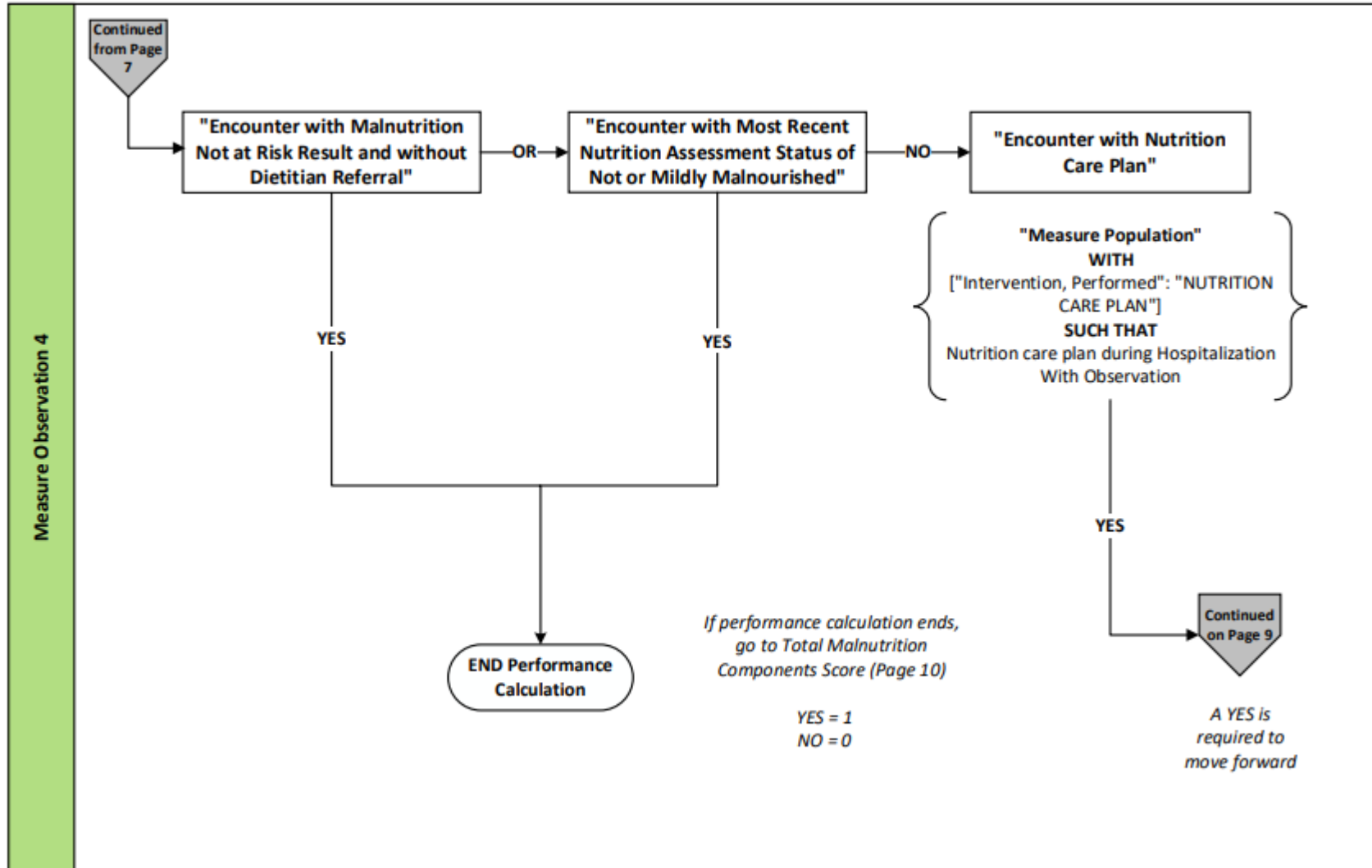
Measure Components	2025 Reporting Year	2026 Reporting Year
Measure Observation 3	define function "Measure Observation 3"(Encounter "Encounter, Performed"): if ("Encounter with Malnutrition Not at Risk Result and without Hospital Dietitian Referral") contains Encounter or ("Encounter with Nutrition Assessment Status Not or Mildly Malnourished") contains Encounter then 0 else if ("Encounter with Malnutrition Diagnosis" contains Encounter and "Encounter with Nutrition Assessment and Identified Status" contains Encounter and (("Encounter with Nutrition Assessment Status Finding of Moderately Malnourished" contains Encounter or "Encounter with Nutrition Assessment Status Finding of Severely Malnourished" contains Encounter))) then 1 else 0	define function "Measure Observation 3"(Encounter "Encounter, Performed"): if ("Encounter with Malnutrition Not at Risk Result and without Hospital ¹ Dietitian Referral") contains Encounter or ("Encounter With <u>Most Recent</u> ² Nutrition Assessment Status of Not or Mildly Malnourished") contains Encounter then 0 else if ("Encounter with Malnutrition Diagnosis" contains Encounter and "Encounter <u>With Most Recent</u> ² Nutrition Assessment And Identified Status" contains Encounter and ((" Encounter with Nutrition Assessment Status Finding of Moderately Malnourished " contains Encounter or " Encounter with Nutrition Assessment Status Finding of Severely Malnourished " contains Encounter ¹))) then 1 else 0

Notes:

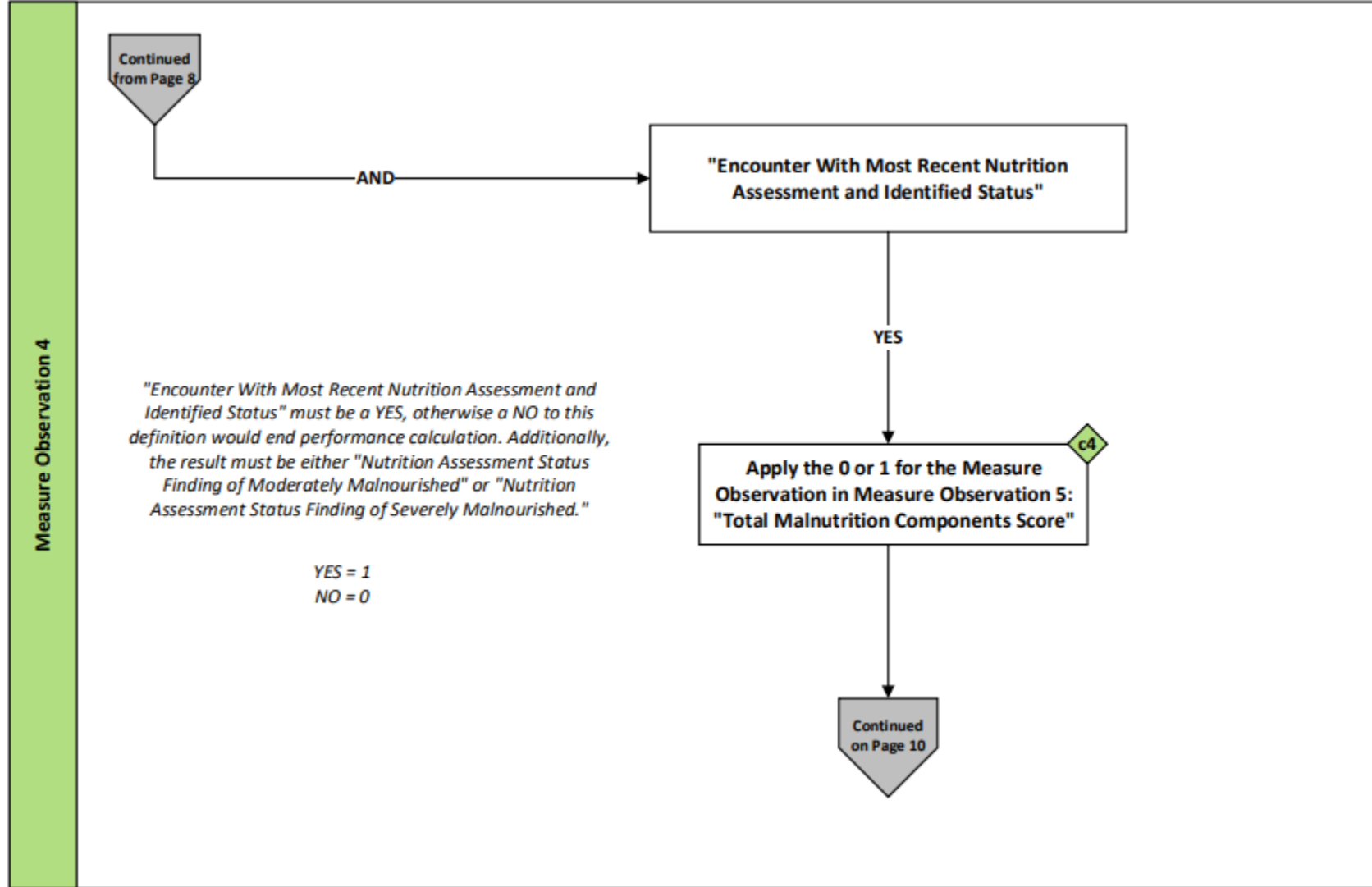
¹ Indicates text that contains strikethrough

² Indicates underlined text

Measure Observation 4



Measure Observation 4 (cont.)



Logic Update (15/16)

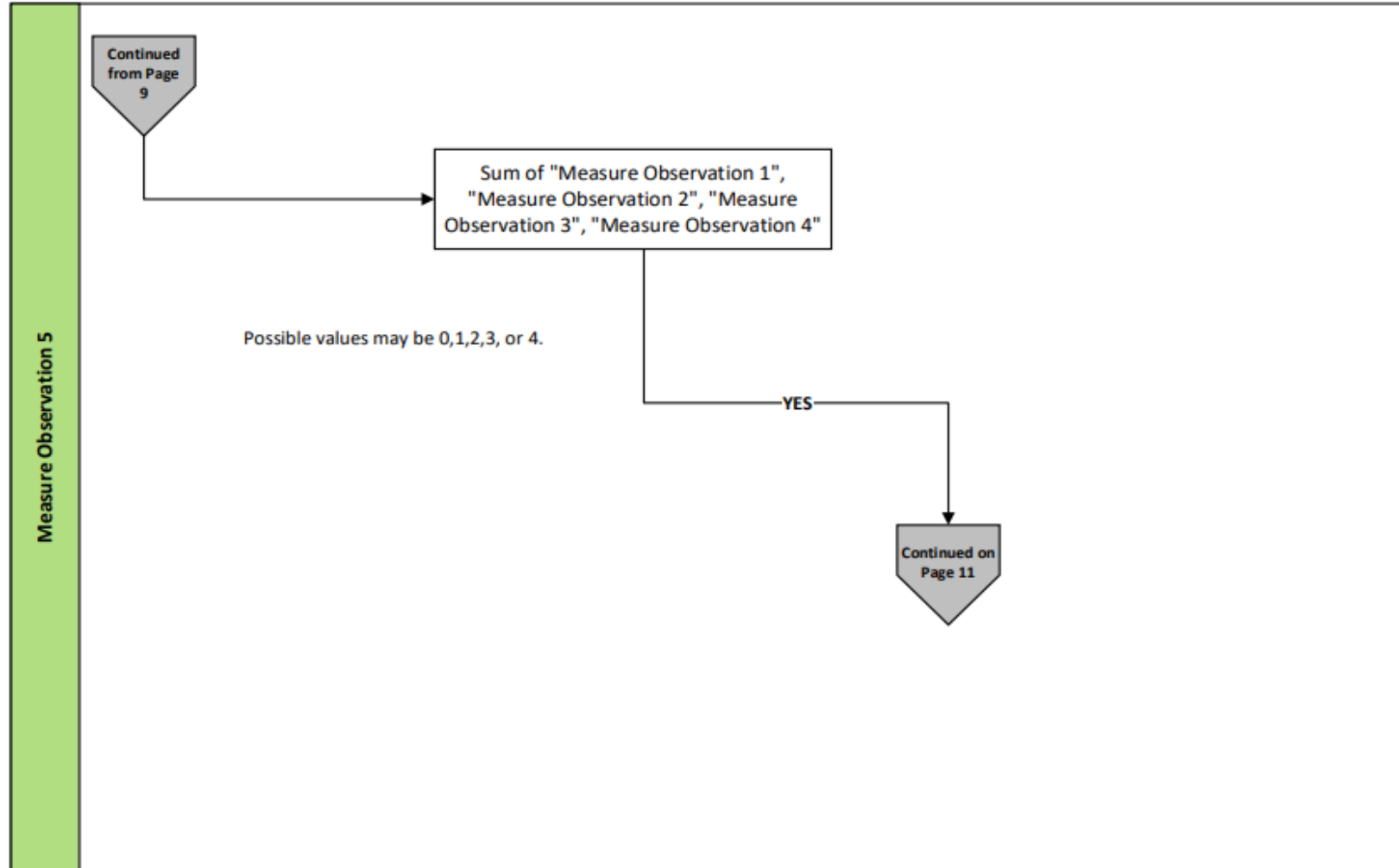
Measure Components	2025 Reporting Year	2026 Reporting Year
Measure Observation 4	<pre> define function "Measure Observation 4"(Encounter "Encounter, Performed"): if ("Encounter with Malnutrition Not at Risk Result and without Hospital Dietitian Referral") contains Encounter or ("Encounter with Nutrition Assessment Status Not or Mildly Malnourished") contains Encounter then 0 else if ("Encounter with Nutrition Care Plan" contains Encounter and "Encounter with Nutrition Assessment and Identified Status" contains Encounter and (("Encounter with Nutrition Assessment Status Finding of Moderately Malnourished" contains Encounter or "Encounter with Nutrition Assessment Status Finding of Severely Malnourished" contains Encounter))) then 1 else 0 </pre>	<pre> define function "Measure Observation 4"(Encounter "Encounter, Performed"): if ("Encounter with Malnutrition Not at Risk Result and without Hospital¹Dietitian Referral") contains Encounter or ("Encounter <u>With Most Recent</u>² Nutrition Assessment Status of Not or Mildly Malnourished") contains Encounter then 0 else if ("Encounter with Nutrition Care Plan" contains Encounter and "Encounter <u>With Most Recent</u>² Nutrition Assessment And Identified Status" contains Encounter and (("Encounter with Nutrition Assessment Status Finding of Moderately Malnourished" contains Encounter or "Encounter with Nutrition Assessment Status Finding of Severely Malnourished" contains Encounter) ¹) then 1 else 0 </pre>

Notes:

¹ Indicates text that contains strikethrough

² Indicates underlined text

Measure Observation 5



Measure Observation 6

Measure Observation 6

Continued from Page 10

Average of 100 *("Measure Observation Total Malnutrition Components Score" divided by "Total Malnutrition Care Score Eligible Occurrences")

For the reporting facility, the Aggregate Operator 'Average' averages the performance of each "Total Malnutrition Care Score as Percentage" across all eligible hospitalizations during the measurement period.

"Total Malnutrition Care Score Eligible Occurrences" is 4 by default, except in the following cases:

- *It is 1 if the following is true:*
 - *A "Malnutrition Risk Screening" was performed, the result was "Not At Risk", and a "Dietitian Referral was not ordered".*
- *It is 2 if any of the following are true:*
 - *A "Malnutrition Risk Screening" was performed with a result of "Not At Risk", and a "Dietitian Referral" was ordered and the most recent "Nutrition Assessment" result is "Well Nourished," "Not Malnourished," or "Mildly Malnourished".*
 - *A "Malnutrition Risk Screening" was performed with a result of "At Risk" and the most recent "Nutrition Assessment" result is "Well Nourished," "Not Malnourished," or "Mildly Malnourished".*
 - *A "Malnutrition Risk Screening" was performed with a result of "At Risk", but a "Nutrition Assessment" was not performed.*

Logic Update (16/16)

Measure Components	2025 Reporting Year	2026 Reporting Year
Measure Observation 6	<p>define function "Measure Observation Total Malnutrition Composite Score as Percentage"(Encounter "Encounter, Performed"):</p> $100 * (\text{"Measure Observation Total Malnutrition Components Score"}(\text{Encounter}) / \text{"Total Malnutrition Composite Score Eligible Occurrences"}(\text{Encounter}))$	<p>define function "Measure Observation Total Malnutrition <u>Care</u>² Composite¹ Score as Percentage"(Encounter "Encounter, Performed"):</p> $100 * (\text{"Measure Observation Total Malnutrition Components Score"}(\text{Encounter}) / \text{"Total Malnutrition Care2 Composite1 Score Eligible Occurrences"}(\text{Encounter}))$

Notes:
¹ Indicates text that contains strikethrough
² Indicates underlined text

MCS - Frequently Asked Questions (FAQ) (1/4)



Question:

How should hospitals interpret their MCS scores?

Answer:

Higher scores indicate better performance, while lower scores indicate opportunities for improvement.

Hospitals may internally monitor the performance of the MCS and four measure observations over time to facilitate quality improvement for patients who are malnourished or at risk of malnutrition

MCS - Frequently Asked Questions (FAQ) (2/4)



Question:

Can a nutrition risk screening be completed more than once during a hospital encounter? If the results differ, which screening result counts for the measure?

Answer:

Screening may take place more than once in one inpatient encounter. Current measure logic prioritizes a Not At Risk screening result at any time during the encounter, regardless of the timing. However, the presence of a Dietitian Referral Order supersedes the Not At Risk result and allows for performance measurement of additional measure observations.

MCS - Frequently Asked Questions (FAQ) (3/4)



Question:

What if malnutrition risk screening does not identify risk for malnutrition but malnutrition is identified later in the admission?

Answer:

In the instance of a Not At Risk malnutrition risk screen result, MCS performance measurement stops, regardless of completion of additional measure observations, with a performance score of 100%. However, the presence of a Dietitian Referral can allow for performance measurement of additional measure observations despite the Not At-Risk result. Note that performance measurement should not necessarily dictate appropriate care in this setting. Refer to local policies and procedures to ensure care provision aligns with expectations

MCS - Frequently Asked Questions (FAQ) (4/4)



Question:

Will the hospice exclusion negatively affect patient care?

Answer:

No. Patients in hospice care, with a malnutrition diagnosis, may still receive care by Registered Dietitian and medical providers.

MCS Related Resources

Academy of Nutrition and Dietetics

- Malnutrition Care Score webpage:

<https://www.eatrightpro.org/practice/quality-care/malnutrition-care-score>

Resources

eCQI Resource Center – CMS EH Measures -

https://ecqi.healthit.gov/eh-cah/ecqms?global_measure_group=eCQMs

Get Started with eCQMs - https://ecqi.healthit.gov/ecqms?qt-tabs_ecqm=education

Teach Me Clinical Quality Language (CQL) Video Series -

<https://ecqi.healthit.gov/cql/education>

Hospitalization with Observation -

https://www.youtube.com/watch?v=3yqwOU2XcZM&ab_channel=CMSHHSgov

What is a Value Set? -

<https://register.gotowebinar.com/recording/4766956164118938369>



Additional Resources

Value Set Authority Center (VSAC) Support -

<https://www.nlm.nih.gov/vsac/support/index.html>

Expert to Expert Webinar Series - <https://www.jointcommission.org/en-us/knowledge-library/support-center/measurement/quality-measurement-webinars-videos>

ASTP/ONC Issue Tracking System - <https://oncprojecttracking.healthit.gov/>

Live Q&A Segment



- Please submit questions via the question pane
- Click the Question mark icon in the toolbar
- Type and submit your question
- Include slide reference number when possible
- All questions not answered verbally during the live event will be addressed in a written follow-up Q&A document
- The follow-up document will be posted to the Joint Commission website in several weeks after CMS approval

Expert to Expert Webinar Series Slides and Operations Questions

To access webinar recording links, slides, and transcripts, visit

<https://www.jointcommission.org/en-us/knowledge-library/support-center/measurement/quality-measurement-webinars-videos>) and scroll down.

Questions about webinar operations or obtaining Continuing Education credit:

tjcwebinarnotifications@jointcommission.org



Webinars & Videos

The Joint Commission offers a variety of educational measurement-related webinars (live and on-demand), and other recorded video content. Topics include specific performance measures, reporting requirements, and topics that are clinically-, technically-, or statistically-focused. Webinars and videos address electronic clinical quality measures (eCQMs) and chart-abstracted measures used for accreditation and certification purposes. For additional information on each webinar or video series, see below.



Webinar Series



Pioneers in Quality General Sessions

Pioneers in Quality General Sessions provide information such as measurement requirements, changes in reporting, opportunities for engagement and/or recognition, and insights regarding data analysis of national clinical quality measurement data received. This generalized content is meant as education for hospitals and health systems to assist them in meeting current and future requirements.



eCQM Expert to Expert Series

Expert to Expert Webinar Series provides a deep-dive into measure intent, logic, and other clinical/technical aspects of electronic clinical quality measures (eCQMs) to assist hospitals and health systems in their efforts to improve eCQM data use for quality improvement. This series incorporates expertise from Joint Commission and other key stakeholders.



Video Shorts

Joint Commission produces a series of on-demand educational video shorts about electronic Clinical Quality Measures (eCQMs). Episodes are approximately 2-3 minutes in length and offer an engaging and contemporary approach to teach these complex and comprehensive topics. The eCQM video shorts lead the viewer to understand application of eCQM resources, eCQM constructs and Logic expression language concepts (CQL, FHIR).



Measure-Specific Webinars



Continuous Customer

Continuing Education Survey and Certificate

Also see the separate handout detailing the CE requirements.



Access survey via QR code

Use your mobile device to scan the QR code on the next slide. You can pause the presentation.



Access survey via link in email

An automated email sent after this broadcast also directs you to the evaluation survey.



Survey open for 2 weeks

CEs are available for live broadcast participation only. Promptly complete the survey.



Obtain Certificate

After completing survey, print or download PDF CE Certificate. Certificate link also provided via email.

Thank you for attending!

Scan QR code to
access CE
Attestation and
Evaluation
Survey



tjcwebinarnotifications@jointcommission.org



www.jointcommission.org/en-us/knowledge-library/support-center/measurement/quality-measurement-webinars-videos

Acronyms

Acronym	Definition
CBE	Consensus-Based Entity
CY	Calendar Year
eCQM	Electronic Clinical Quality Measure
ED	Emergency Department
EHR	Electronic Health Record
FY	Fiscal Year
HIQR	Hospital Inpatient Quality Reporting
IP	Initial Population
ICD-10	International Classification of Diseases, Tenth Revision
MCS	Malnutrition Care Score
SNOMED CT	Systematized Nomenclature of Medicine - Clinical Terms
VSAC	Value Set Authority Center