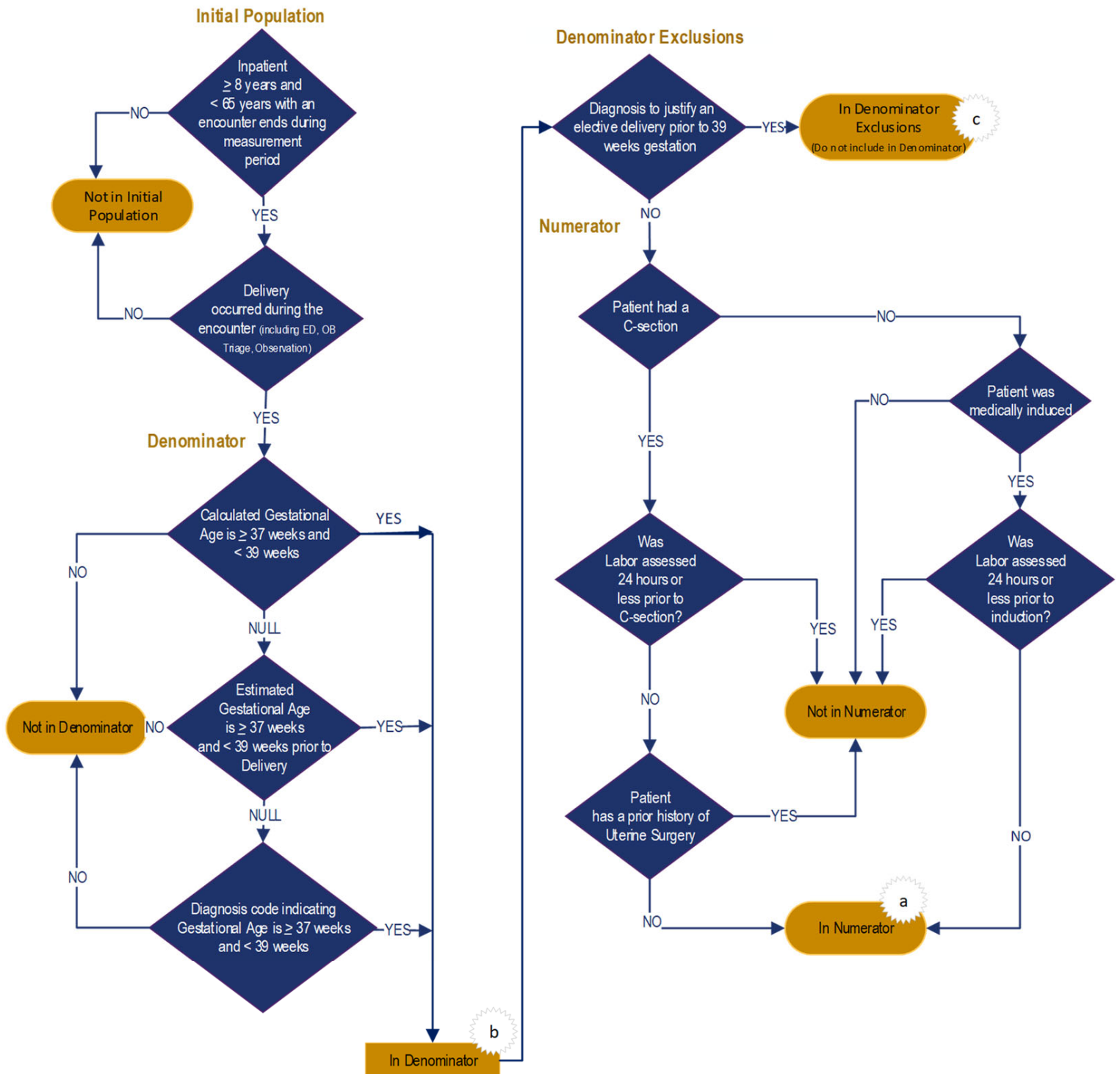


Elective Delivery

Patients with elective vaginal deliveries or elective cesarean births at ≥ 37 and < 39 weeks of gestation completed



Sample Calculation

Performance Rate = $\frac{\text{Numerator (a=9 patients)}}{\text{Denominator (b=100 patients) - Denominator Exclusions (c=10 patients)}} = 10\%$

Measure Flow Narrative

Measure Description

Patients with elective vaginal deliveries or elective cesarean births at ≥ 37 and < 39 weeks of gestation completed

Initial Population

Inpatient hospitalizations for patients age ≥ 18 years and < 65 admitted to the hospital for inpatient acute care who undergo a delivery procedure with a discharge date that ends during the measurement period.

Denominator

Inpatient hospitalizations for patients delivering newborns with ≥ 37 and < 39 weeks of gestation completed

Denominator Exclusions

Inpatient hospitalizations for patients with conditions possibly justifying elective delivery prior to 39 weeks gestation

Numerator

Inpatient hospitalizations for patients with elective deliveries by either:

- Medical induction while not in labor prior to the delivery procedure
- Cesarean birth without labor or with no history of a prior uterine surgery